



LINCOLNSHIRE'S LEADING
INDEPENDENT GRANT MAKER



Funding for Lincolnshire

ANNUAL REVIEW 2023/24

Lincolnshire Community Foundation (LCF) believe that when people work and give together, real sustainable and consistent change can happen for people and communities. To date, we've distributed over £22M to charities, community groups and organisations within Greater Lincolnshire with emphasis on small grants delivering a big difference.



“ The funding has literally enabled us to change the lives of the displaced Ukrainian Community that has sort safety in the area of Lincolnshire. ”

Boxes of Hope

“ The support that we have received from the Lincolnshire Community Foundation has been invaluable throughout the project. ”

Willoughby Road Allotments

“ We are very grateful for the support provided. It has allowed us to set up this project which has now been running a year. We have been able to reduce food poverty in our community. ”

Waste not Want Not

“ The funding was easy to apply for and promptly awarded in time to be useful. ”

The Culfrey Lands Trust



Contents

01	Welcome from the Chair & CEO	14	Beneficiaries
02	Lincolnshire Today	15	Community Investment Funds (CIF)
04	Grants Awarded	16	Coastal Communities Challenge Big Local
05	Beneficiaries	17	MAST
06	Our Impact	18	Programmes: LocalMotion
07	LVIS	19	Programmes: GLAP
08	UKSPF GRASSroots Grant	20	Ways to Give
09	Beneficiaries	22	Funds we've Managed this Year
10	Our Ukraine Response	23	Financial Statement
11	Beneficiaries	24	Our People
12	Disaster & Emergency Funding	25	Our Trusted Connections
13	Household Support Fund		

Welcome from the Chair & CEO

1

Our mission is to improve the lives and wellbeing of ordinary people throughout Greater Lincolnshire. We seek to achieve this through building long term endowment, grant making, social investment, advice and practical support: we listen, convene, collaborate, co-create and fund.

We couldn't do this without our fund holders and supporters, and we'd like to extend our sincere thanks and gratitude to each of them for choosing to give through Lincolnshire Community Foundation, helping create more resilient and empowered communities. Since we were established in 2002, we have awarded nearly £22 million in grants. We are proud to be the County's largest independent grant maker and a member of the UK Community Foundation Network.

It's a pleasure to be able to share our impact and reflect on another financial year in which we have nearly doubled the total value of our grants. It's important not to forget the people behind the groups we support; they inspire optimism and help lead communities to a brighter more positive future.

We must recognise the challenges faced by the poorest and most vulnerable people who continue to be impacted by the increased

cost of living, which has undoubtedly created deepening poverty. This has also taken its toll on the voluntary and community sector and, as a result, we've lost some vital local services. Nevertheless, the small charitable organisations we are here to serve continue to demonstrate their unwavering commitment, drive and resilience in pursuit of a collective vision to create a better county where everyone can thrive.

Our aim is to celebrate and build local philanthropy, and continue to build endowment, which sees donors' gifts invested to benefit people right now, and for generations to come. This will prove to be a vital community asset which we will steward and nurture, as there is still much to do.

The team's dedication to understanding the sector and small charitable organisations remains steadfast, and we will continue to inspire others to experience the benefits of giving locally.

£1.6m



Distributed

198



Projects supported

4,952



Individuals helped

£5m



Endowment

£400k



Programmes

Our Vision

We are dedicated to enhancing the wellbeing of individuals across Greater Lincolnshire. Our mission is accomplished through creating lasting endowments, providing grants, social investments, offering advice, and practical support. We listen, convene, collaborate, co-create and fund.

Our Mission

We aim to build a county of vibrant communities where residents are healthy, content, resilient, and empowered. The goal is to create foundations for united communities, enhancing quality of life and providing equal opportunities for everyone, encouraging individuals to actively participate in society and achieve their full potential.

LCF was the first organisation of your kind that I have come across in my career so far and I have always been complete wowed by your hard work, relational approach and determination to see people thrive! So thank you for all you continue to do across Lincolnshire and beyond!

**Joy Adcock, project co-ordinator
Upbeat Communities.**

Lincolnshire Today

Lincolnshire comprises of rural, coastal, and urban areas, offering a great environment for living and working. However, some people face significant challenges and barriers in accessing local services and opportunities, affecting their quality of life.

Poverty is a prevalent issue for many residents, making it difficult to escape this cycle and limiting their life prospects. This situation results in hardships, isolation, and has a profound impact on their mental and physical wellbeing, as well as restricting employment opportunities.

56% of households in North East Lincolnshire are in deprived areas, the National average is 51%



420 postcode areas in Lincolnshire have been named amongst the most deprived in England



1 in 3 (35%) children in North East Lincolnshire are living in poverty (c57,909)



Greater Lincolnshire is the **2nd** largest county (by area) in England



The 7 Domains of poverty are:



Income



Employment & Skills



Barriers to housing



Education



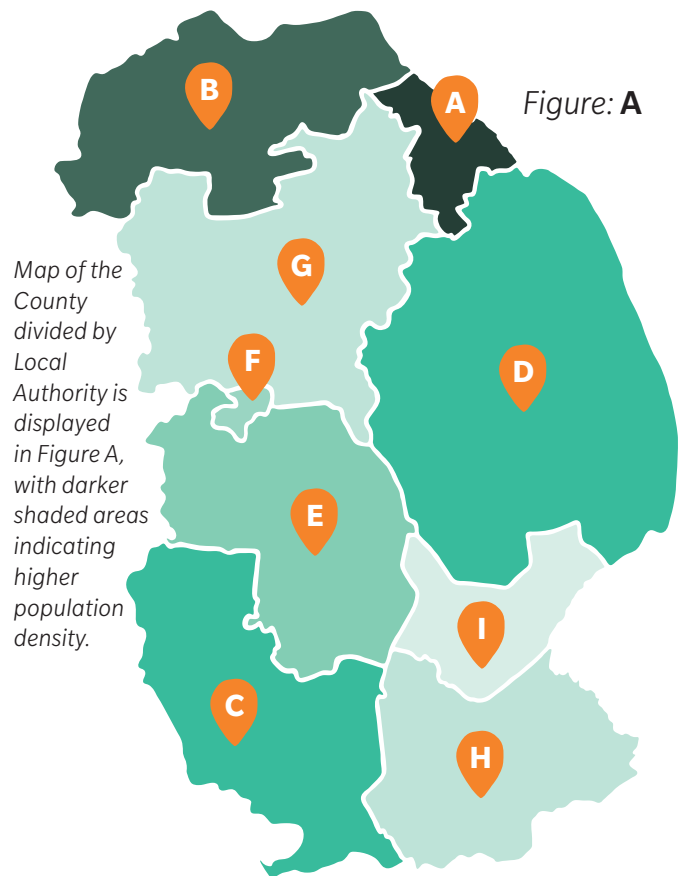
Health & Disability



Crime



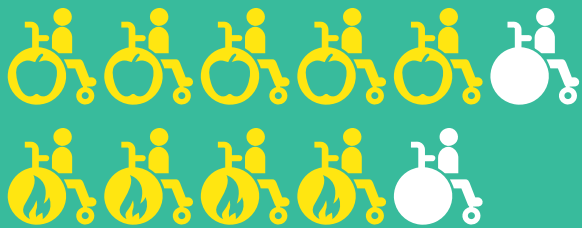
Environment



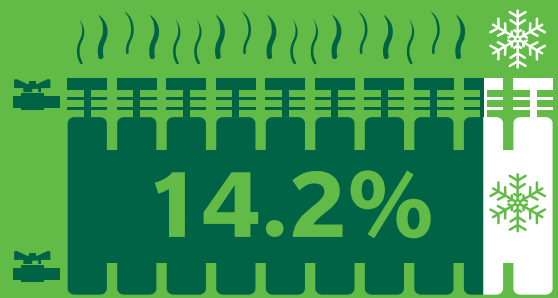
Population

A) North East Lincolnshire	169,674
B) North Lincolnshire	156,966
C) South Kesteven	143,400
D) East Lindsey	142,292
E) North Kesteven	118,075
F) City of Lincoln	103,813
G) West Lindsey	95,152
H) South Holland	95,119
I) Boston Borough	70,503
Total	1,094,994

1 in **6** families with disabled children go without food, **1** in **5** go without heating



14.2% of households are experiencing fuel poverty



In Lincolnshire almost **1** in **4** people report a high anxiety score



42% of adult residents fail to meet Chief Medical Officer physical activity guidelines



The City of Lincoln has the highest proportion of non-car owning households at **30%**



8.3% of 16-64 years population have no qualifications compared to 6.6% across England



1 in **4** 5-year-olds in Lincolnshire display dental decay



1 in **50** homes in the County do not meet the decent healthy home standard



Grants Awarded

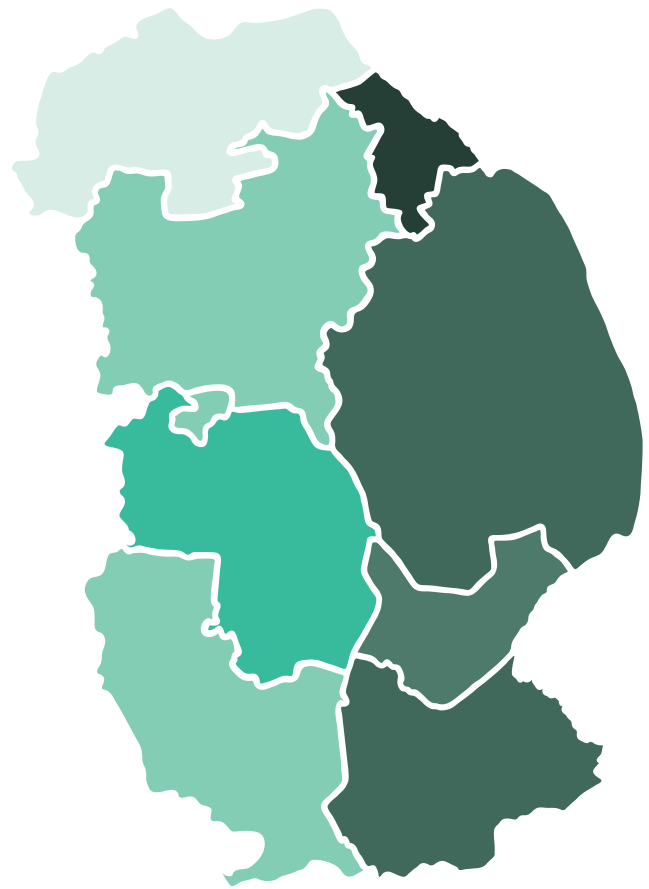


Lincolnshire County shaded from the highest (dark) to lowest (light) areas of deprivation*.

Distribution of LCF funding to organisations for this year from highest (dark) to lowest (light).

Figure: B

Figure: C



When comparing the two maps above, you will notice figure B identifies the areas of greatest need, while figure C illustrates the allocation of funding by Lincolnshire Community Foundation.

Our aim is to focus on the areas of greatest need whilst collaborating with professional associates, philanthropists, Local Authorities, and businesses to ensure funds reach those communities that need support.



*identified through the LVIS dataset

Beneficiaries



Friends of St Johns Primary School

“ This stage has provided new and imaginative equipment that will help the children grow confidence, develop greater interaction with other children following the COVID lockdown experience. ”



“ We cannot thank you enough this funding has helped so much, we couldn't have put on the Christmas buffets [for the homeless] without you. ”

Grimsby Food Kitchen

“ The friendly, helpful and understanding approach of the grant team has been very much very much appreciated in helping to achieve this grant as we have successfully brought together a variety of people throughout our community varying in age including older and younger adults and families with younger and older children. ”

South Kyme Biodiversity



“ The local community will benefit from this completion of work by the continuity of delivering services to schools and the nine local communities (Including Fenside, Swinehead and Kirton) providing a safe place for young people on the streets. ”

Roadhog Bus – Lincolnshire Youth Mission Ltd.

“ Many thanks for your investment which has helped make a positive impact on the lives of Lincolnshire carers. ”

Carers First



“ With your grant, we helped many families to reconnect with nature and each other through fun and engaging experiences. We've reduced social isolation and helped ease anxiety through inclusive and interactive activities. ”

Feathers Teens CIC



“ This youth session has helped them in the struggle with so many changes and trauma. Adults who support the Ukrainian refugees also stayed and helped with this new youth activity. We have seen a change in behaviour with most of the young people. ”

Jubilee Church CIC



Our Impact

Our mission is to bring about positive change in people’s lives whether directly or by distributing funds to local community groups which are addressing critical issues like poverty, isolation, poor mental health and loneliness.

We acknowledge the significance of showcasing the impact of our grants on communities in Lincolnshire so that our donors and fund holders can witness the difference their contributions make in the lives of local residents.

We created the Lincolnshire Visual Intelligence System (LVIS) highlighting key themes to inform our grant making and place shaping.

We have categorised all 198 funded projects this year into these themes. Additionally, we have highlighted 6 key areas to demonstrate our impact based on outcomes and beneficiary data.

Funding for groups and community organisations



What are the 16 LVIS themes?

- Arts & Culture
- Barriers to Transport
- Child Poverty
- Crime & Safety
- Digital Exclusion
- Domestic Abuse & Violence
- Employment & Skills
- Environment
- Homelessness
- Mental Health & Wellbeing
- Physical Health & Wellbeing
- Poverty
- Social Isolation & Loneliness
- Social Justice & Inequality

The 6 key areas

- Employment
- Environment
- Mental Health
- Poverty
- Social Isolation
- Social Justice

- ✓ Food
- ✓ Fuel

Two new themes have been added in response to the current cost of living crisis as identified by LVIS.

The Lincolnshire Visual Intelligence System (LVIS)

7

Developed by Aaron Bailey, our own Data Research and Environment Officer, LVIS is an interactive dataset providing easy access to visual data to street level using sixteen themes obtained from reputable open source data and was created to highlight areas of most need across the County. The tool is freely available to interrogate and extrapolate.

Visualisations allow street-level identification of deprivation pockets linked to themes, searchable by Local Authority District. LVIS aims to achieve two primary objectives:

First Goal

Identify and highlight potential pockets of deprivation at a street level within the Greater Lincolnshire Area.

Second Goal

Inform the voluntary and community sector about potential funding allocation to address emerging deprivation areas in Greater Lincolnshire, aiming to create a significant impact within these communities at a street level.

Why use LVIS?

LVIS provides valuable statistical data that enables the user to extract information that might strengthen a funding application or enable public, voluntary or private sector partners to consider how to best to target their investment or provide practical support locally in a more impactful way.

The Lincolnshire Visual Intelligence System has played a pivotal role for Boxes of Hope when completing funding applications. LVIS is simple to use, it means when looking at an authority or the whole county you can quickly see which towns/villages are more deprived. LVIS also gives us reassurance that we are working in the areas where the need is highest. We refer to LVIS regularly and will continue to do so both when completing funding applications and for delivery of projects, it is free to use and provides excellent up to date information and statistics.

Mandy Baxter,
Boxes of Hope CIC

Since we were introduced to LVIS in 2022, there has been a strong push to leverage its capabilities for identifying needs across the County, particularly in securing project funding. This tool has proven instrumental in the Food and Fuel Need project, led by LVET in partnership with LCF.

By overlaying food and fuel need data with current provision maps, the project successfully identified service gaps, attracting considerable interest from local councils, the Greater Lincolnshire Food Partnership, and the VCFSE sector. The collaboration with LCF, particularly Aaron, has been exceptional, marked by their deep expertise and professionalism. The project is poised to be a valuable asset to the sector once completed.

Teri Dimpleby, Project Support Officer,
Lincolnshire Voluntary Engagement Team



www.lincolnshirecf.co.uk/lvis

UKSPF GRASSroots Grant

8

In July 2023, the Lincolnshire Community Foundation was granted delegated authority by the South and East Lincolnshire's Council's Partnership to administer their £1.2 million GRASSroots Grant. This grant is a key component of the UK Shared Prosperity Fund (UKSPF) and is specifically aimed at supporting 'Communities and Place' development initiatives within the region. The GRASSroots Grant will provide funding for eligible projects and activities into 2025.

The object of the fund was to enable places to invest in and restore their community spaces and create the foundations for growth at neighbourhood level. The intention is to strengthen the social fabric of communities, building pride in place by improving local community infrastructure, creating opportunities for social connections to develop and thrive.

Not for profit community groups, registered charities, social enterprises, Town and Parish Councils were able to apply for grants up to £24,999.00 for capital or revenue projects and activities.

Some successful projects included:

- Replacement of windows, doors, and a leaking roof of a community centre, making the building warmer and more secure.
- Creation of a community village green, including a play area, seating, and memorial area.
- Contribution to a new hygienic food preparation and serving area in a community hub building.
- Development of access to activities, bringing people together to build strong social links through workshop, music, and exercise.

£97,064

8 awards

Boston
Borough

£232,458

23 awards

East Lindsey
District Council

£196,043

20 awards

South Holland
District Council

£525,566

51 awards

Total

Case Study:

Improving the Donington Environment for all (IDEA)

Replaced a picnic table and current play park equipment with new, more accessible, and inclusive equipment for all the community to access and enjoy.



Case Study:

Scarlet Community Music Club

Held 24 music sessions at various venues across South Holland. Sessions include community members from the Movement for Memory, dementia support, children with disabilities, and people living in isolation groups.



Beneficiaries

It was wonderful to get confirmation of the grant and, on a personal note, I was extremely grateful for your support, patience and understanding during the application process.

Ian at Surfleet Play and Recreation Charity



Thank you so much for granting us this money, it means a lot to us to have this opportunity to invest in our community and our area.

Sarah, Binbrook Parish Council

Firstly, thank you. You won't quite understand the impact this will have on our club and local children /community involved. We have been desperate for some help and have been struggling financially to provide the equipment and goals needed. I personally could not be more grateful. This award is a huge help for the club, and now a lot of pressure has been taken away from all volunteers to try and raise those huge funds!

Ryan, Grimboldby Football Club



Thank you for letting me know that our grant application has been successful. I notified the villagers last night who were delighted. I would also like to take this opportunity to thank you for your efforts to facilitate the grant.

Jeff at High Toynton Parochial Church Council

Case Study:

Wainfleet St. Mary Parish Council

The Jubilee Orchard has taken a previously unusable space and through community consultation, participation and expertise has now become a long-lasting and flexible resource supporting local priorities.



Our Ukraine Response

Ukrainians were thrust into a living nightmare when, on 24 February 2022, the concept of war became a stark reality when Russian troops invaded their country.

As news of this tragic situation unfolded 1,600 miles away in Lincolnshire, Staff and Trustees at Lincolnshire Community Foundation, immediately launched the Big Lincolnshire Welcome Appeal, raising over £13,500. This provided small grants to 57 families and individuals for essential items helping them integrate into their new environment.

Recognising the positive impact this funding was having on Ukrainian refugees, Lincolnshire County Council invited LCF to distribute further funds, totalling £100,000 between December 2022 and July 2023 from the UK Government's Homes for Ukraine Scheme. We were able to support a further 241 families and individuals.

Observing the evolving needs of refugees, there has been a shift in what was needed. Initially, refugees sought communication devices for job hunting and staying connected with family, along with bicycles. However, more recent requests indicate a focus on long-term settlement, with requests for white goods and furniture as refugees transition from host accommodation to independent living.

Lincolnshire County Council, having acknowledged the part the voluntary, community, faith and social enterprise sector was playing in supporting Ukrainian refugees, through reducing isolation, enhancing cohesion, supporting mental health and well-being, providing assistance with employment and learning opportunities, Lincolnshire County Council allocated a further £100,000, which was distributed to 12 groups in Lincolnshire.

As news of the Big Lincolnshire Welcome Fund spread, the Charitable Trust of one of Britain's prominent food producers, Cranswick PLC, generously donated £30,000. LCF was then able to support 40 individual applicants as well as 6 community organisations. This kind gesture was to show support for Ukraine in a practical impactful way.

Local photographer Martha Woodward crafted a unique 2021 calendar showcasing the charm of Caistor, and generously, she donated the £950 profit from calendar sales to aid Ukrainian refugees in Caistor and the surrounding area. This contribution assisted six households, with some funds directed towards fostering new business concepts that resulted in job opportunities. We continue to have a strong relationship with Lincolnshire County Council and the Ukrainian community. As we look ahead to the coming year and beyond, the unpredictable future may create challenges and uncertainties. Nevertheless, we will continue to do what we can to assist our Ukrainian guests.

Thank you very much for your help. For the voucher for the purchase of a bicycle. The child is very satisfied, because he can spend time in the fresh air and cover long distances with pleasure.

Sometimes, a little help is better than a lot of sympathy! For us it is such a difficult period in our lives, your support is priceless. You are actually doing extremely good things, with incredible gratitude to you all, I'd like to thank you.

Oksana, BLWF recipient

Thank you very much for your attention to my query and for your generosity !!! You ridded me off from a huge problem how to save money to purchase those items amid skyrocketing prices for food and utilities. God bless everyone who was so kind to donate money for the Ukrainians.

It is impossible to express all that we feel! On behalf of my family, I bow low and many, many thanks to you.

Groups supported
(Since 2022)

19

(This year)

6

Group funding distributed to date
(Since 2022)

£117,000

(This year)

£17,000

Households supported
(Since 2022)

438

(This year)

177

Total individual funding
(Since 2022)

£128,097

(This year)

£38,510

Beneficiaries

Case Study:

Boxes of Hope, Ukraine Support

In the wake of the Ukraine war, Boxes of Hope swiftly activated their efforts to extend assistance to Ukraine from Lincolnshire.

With a surge in arrivals from the war-torn Country, the organisation swiftly transformed into a pivotal support hub for those navigating new circumstances. Thanks to various grants from the Lincolnshire Community Foundation, this essential resource, based in Holbeach, has been able to consistently provide community support and facilitate integration.

Acknowledging the significant influx of individuals from Ukraine into the county, Boxes of Hope has broadened its scope to offer immediate aid to all Lincolnshire residents, particularly focusing on those in the remote areas of South Holland. The organisation has implemented regular drop-in sessions and advisory services to enhance community support and foster integration.

While maintaining their commitment to sending aid to Ukraine,

Boxes of Hope has also allocated donated items to families in Lincolnshire who are establishing new homes in the aftermath of war or facing financial hardships. Mandy Baxter, the Director of Boxes of Hope, expressed gratitude, stating, "LCF has supported Boxes of Hope from the beginning with practical help with our governance and funding, without those, we wouldn't be here today".



My 5-year-old daughter and I moved to a new house and the opportunity to buy a washing machine was very important to us. Thank you very much for your support and help.

Thank you for your care and concern for my family. In fact, my family with two small children is currently going through a very difficult period, but I am sincerely glad that there are caring people in the world who help people like us.

My family is currently going through a very difficult period, but I am sincerely glad that there are caring people in the world who help people like us.

Case Study:

Stamford Diversity Group

Funding allowed this group to provide activities from June to October 2023 such as a choir, teen games, English lessons, yoga, conversation café, kids/ teen drama, English studies, and a series of spring summer workshops for kids and teens spanning everything from rap, art, and music workshops to more practical things such as bike maintenance and sewing.

These activities focused on children and teens throughout the summer period. It gave an opportunity for young Ukrainians to integrate with local youths, as some were struggling to make friends at school. These sessions also lead to improved levels of English and pronunciation substantially.

English lessons and workshops inevitably improved integration and employment prospects and were a chance for the group to help with practical issues such as child benefit, council tax, universal credit, school uniforms etc.



Disaster & Emergency Funding for Individuals

12

Trustees and Staff at the Foundation have an excellent track record of being able to respond to immediate need. To date we have distributed over £1.25M investing much needed funding into communities across the County from Grimsby down to Sutton Bridge, and Anderby, across to Spalding.

In October 2023, Horncastle experienced severe flooding due to heavy rainfall. Additionally, many people across the County continue to grapple with the ongoing effects of the cost of living crisis.

By collaborating with partners and local authorities, we have successfully distributed £466,486.76 to 1,966 individual households through emergency funding, benefiting nearly 5,000 people.

Case Study:

John and Margaret Flood Recovery Fund recipients

In October 2023, Storm Babet struck Lincolnshire, unleashing heavy, persistent rainfall which caused high groundwater levels and rising rivers. The flood defence along the River Bain was breached, resulting in significant flooding of homes and businesses in Horncastle and nearby areas.

In response to the urgent need for assistance, the Lincolnshire Community Foundation released funds from their Horncastle Health & Wellbeing Fund. Collaborating with East Lindsey District Council, Horncastle Lions, and Horncastle Town Council, they established The Flood Recovery Fund to support residents whose homes had been damaged or severely affected by the flooding.

Amongst those impacted were John & Margaret, a married couple in their 90's who had lived in their home for decades. With deep floodwaters inundating their bungalow, they were immediately evacuated and temporarily housed in an emergency accommodation; a first-floor room above a local pub a few miles away.



Isolated both rurally and digitally, John & Margaret accessed the Flood Recovery Fund after calling the Lincolnshire Community Foundation. Initially hesitant to seek help due to their humble and independent nature, the couple eventually received a small grant to cover insurance excess fees and the costs of drying out their property. Additionally, they were referred to the Household Support Fund to help manage the high electricity bills from running dehumidifiers continuously and were directed to other organisations for further practical and emotional support. John & Margaret deeply appreciated the assistance and funding provided and hope to be back in their own living room watching 'their shows' soon.

" I would like to thank you for your commitment and help throughout the process of the bike hunt. It is absolutely incredible he has a NEW bike!!! Our client has been homeless for 8 years and he has never had anything new! We put it together and I left him to pump up his tyres. My heart is filled with joy for him. We are so very grateful for your tenacity and help!

Jojo Atkins, NHS Support Worker

" We are 2 pensioners who have lived in the flooded property for most of our married lives, and we have never seen flooding like it. We have had to move into temporary accommodation with very few of our own possessions. I was apprehensive to ask for help but your kindness and support has been wonderful, thank you. "

" Thank you for the extra work you did to help us. I can confirm because of this I am now going to be getting some Household Support Funding from your colleagues. "

" My Mother is 96 years old and too proud to ask for help, your patience and support really has been fantastic. "

Household Support Fund

The continuous rise in the cost of living is affecting individuals, resulting in added challenges for those who were already struggling to make ends meet and plunging many deeper into poverty.

In response, the UK Government allocated £2 billion in aid to million households in England and Wales, receiving benefits through top-up payments to address the rising cost of living. However, it was evident that low-income households, families, and pensioners who were not eligible for this assistance also required urgent support to avoid difficult choices between whether to heat their home or eat.

This year, we managed the Household Support Fund for 5 District Councils (East Lindsey, South Holland, Boston Borough, South Kesteven, and West Lindsey). We have distributed over £380,000 to 1,621 households not in receipt of benefits, but nonetheless facing financial challenges. Priority was given to groups such as pensioners, single-parent families, and individuals living alone.

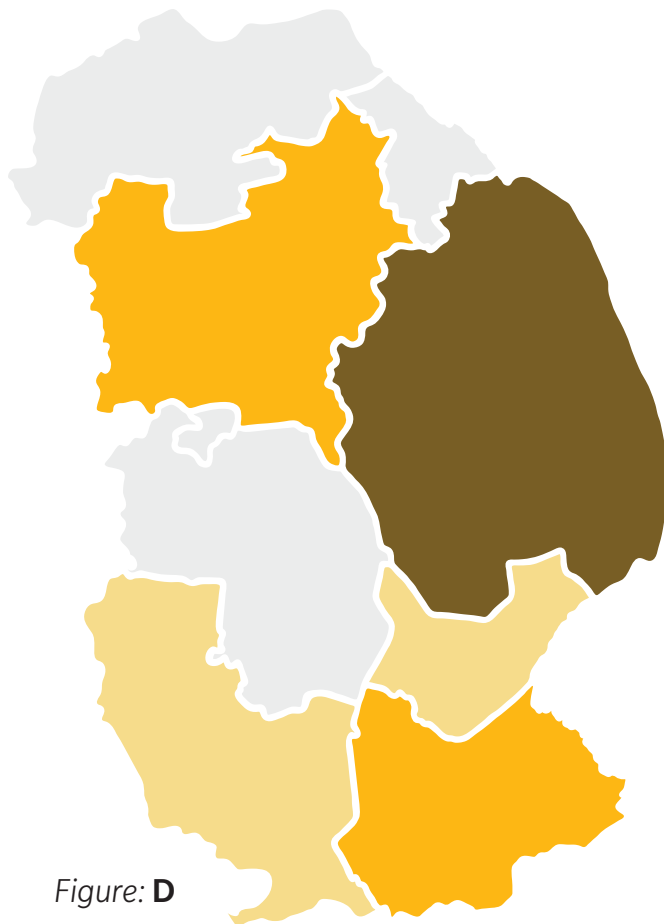
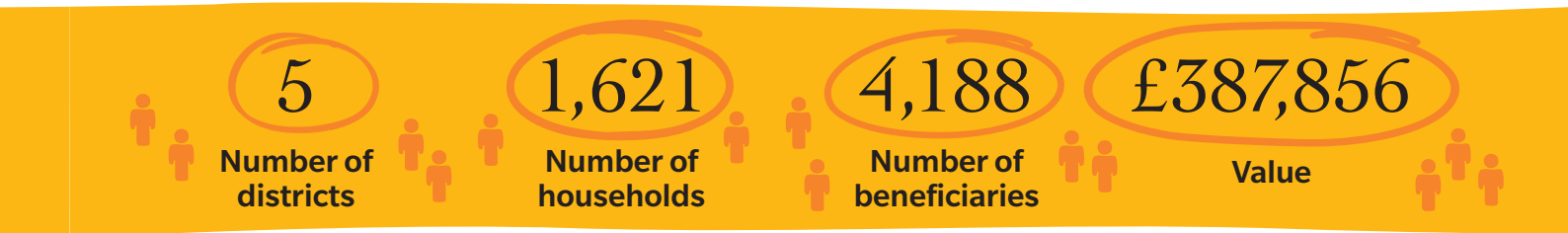


Figure: D

The distribution of funding allocated within the districts that requested us to disperse funding is illustrated in Figure D.

South Lincolnshire Citizens Advice has seen a **29%** increase in people seeking help in the last financial year

A household is officially classed as being in poverty if its income is less than **60%** of the national average

“ You can’t believe what a relief it is knowing that you have given us a realistic opportunity of reducing our fuel debt and providing us with a means to hopefully stay warm this winter. ”

“ Thank you for your help. I cooked a complete roast dinner today and my daughter absolutely loved it she was telling me how good a cook I was and could I cook more like this. I can’t begin to describe what this as done for us both. ”

Beneficiaries

Case Study:

Evan Cornish Grassroots Fund Stepping Stone Theatre for Mental Health, Gainsborough

Stepping Stone Theatre for Mental Health was established in 2015 with the aims to destigmatise mental illness, to create a more compassionate community, and to provide companionship and inclusion through creative endeavours such as theatre, singing, writing, and storytelling. They also run online creative projects, such as podcasts, online live interactive sessions and writing groups.

They offer a weekly walking group to encourage people to take gentle exercise and to disclose and talk about things which may be affecting their mental health. This intervention means problems are solved before they get to crisis level. They encourage people to seek support quickly and reduce episodes that can reach crisis. The Evan Cornish Grassroots Fund has supported the group with funding towards the continuation of their singing sessions by means of venue hire and equipment. The sessions have enabled individuals to build their self-confidence, self-worth and support the reduction of isolation.



Case Study:

Bishop of Lincoln's Social Justice Fund Waste Not Want Not, Scunthorpe

The new 'Waste Not Want Not' Community Shop was the creation of a group of local teachers, and their friends, who observed that many children in the local area didn't have access to three meals a day.

This award was used to buy the initial food stock for the Community Shop located at Ashby Community Centre. The new shop has been welcomed by the residents of Ashby and supported and promoted by the Police and PCSOs who visit the shop.



Thank you for allowing the Grimsby and Cleethorpes Sea cadets the opportunity to receive this much needed grant funding. Since receiving the funds, the band volunteer staff and cadets have purchased the numerous pieces of new band equipment from drum sticks and new heads, band master staffs, drum slings and aprons, too many items to give a complete list here. This has helped foster and cement their pride and support the young cadets have for youth music, it has increased feelings of pride in the unit as a whole, it has improved the young people's social trust in both the local and national community and knowing there is support like yours has led to new members joining the band that will benefit from the new equipment.

Grimsby and Cleethorpes Unit 162
of the Sea Cadet Corps

Community Investment Funds (CIF)

15

LCF manage five Schemes across greater Lincolnshire. Over the years, CIF schemes have supported some worthy, impactful projects, helping to bring people together, provide new facilities and ensuring organisations continue the wonderful work they deliver within their communities.



Recognising our longstanding expertise in distributing CIF funds, we are approached by potential wind or solar farm developers seeking assistance to establish a fund that addresses local needs. These may include improving community facilities, addressing loneliness and social isolation, youth engagement, environmental sustainability such as biodiversity, renewable energy systems, and environmental education. Developers trust our impartiality, excellent track record and value the processes put in place to ensure transparency and fairness.

To ensure that funds are allocated to deserving projects and have a positive impact locally, we recruit, train, and support grant panels led by residents throughout the project's duration. They are then able to make informed recommendations about how CIF funding is distributed locally. The panellists are volunteers bringing valuable local insights and expertise to the decision-making process.

Case Study:

Bicker Trust

Lincolnshire Youth Mission Ltd: To fund the installation on a 1kwh solar panel system as part of a much larger conversion project to a double decker bus.



Case Study:

The Grange

Sutton St James Baptist Church received funding towards renovating their building, creating a space where people and community groups can gather to address and combat the social isolation.



Case Study:

Triton Knoll

Funded improvements to the roundabout at Anderby Creek, making the space safer and more aesthetically appealing to the community and visitors.



Case Study:

Humber Gateway

Ghetto skate park, based in one of the most deprived areas of Grimsby, to install a new ramp within the main skatepark area.



Case Study:

Lacey Solar Farm

Green Futures, supporting running costs for activities on their 3.5 acre site. Workshops promote healthy lifestyles, positive mental health are held alongside craft activities, environmental workshops, walking groups and gardening.



Coastal Communities Challenge Big Local (CCC)

16

It's hard to believe this initiative is nearing the end of its ten-year programme. It's a resident led initiative funded by the National Lottery via the Local Trust, where the community were entrusted to invest £1M with the aim of improving the lives of local people across Mablethorpe, Trusthorpe and Sutton on Sea through the provision of direct services, co-production with other voluntary, statutory and public services addressing the needs of local people as determined by them. The aim was to develop bottom-up solutions, rather than a top-down approach.

The local partnership invited LCF to be the Locally Trusted Organisation (LTO) and hold the funds on their behalf, working with them to deliver the greatest local impact. We've had the privilege and pleasure to get to know each of the partnership over the years and witness, first hand, the difference they've made across these communities, despite facing challenges along the way. They should be very proud of their achievements indeed, which include improving community meeting spaces so they are more resilient, provision of youth activities and facilities, crucial advice and support for the most vulnerable people, support for the homeless, food bank provision, business advice and support, fun activities (often arranged by the partnership themselves), energy efficiency projects, a heritage trail and so much more.

One of the legacy projects is the creation of a Community Interest Company called LN12 CIC, jointly funded by LCF and the CCC partnership. This organisation will continue to do good in and for these communities. The community are far better off for this investment and demonstrates that by shifting power to within communities they can have a say in what services are delivered.



High Sheriff Youth Engagement

This year, we have been working closely with the current High Sheriff of Lincolnshire, Richard Lake, to distribute funding to community groups and organisations across the County. The aim is to support much-needed creative initiatives for youths, with the goal of reducing antisocial behaviour and breaking the cycle of crime. These initiatives are making a significant impact in seven of the nine districts within our catchment area. Thanks to the South and East Lincolnshire Councils Partnership, we are now able to offer funding for creative youth projects in Boston Borough, East Lindsey, and South Holland.

Many of the young people attending our sessions live in Grimsby's West Marsh Estate, an area known for high levels of antisocial behaviour and youth crime. This funding has played a crucial role in preventing these crimes.

MAST – Making A Start

17

The Make a Start (MAST) programme was created in 2011 to help people living in Greater Lincolnshire aged over 16 years to get back into employment, training or education, often removing the final barrier to employment and where they have failed to find support elsewhere.

We have distributed over £58M. Grants have also been used to enable specific training that leads directly into a job (fork lift licences, DBS checks, CSCS card).

In the last 5 years (2018-2023) we have received 414 applications and 181 have been successful beneficiaries, with awards averaging £145. Where we haven't been able to make an award, we have referred applicants to partners (DWP, Volunteer Centre Services, etc) to access other sources of funding or practical support.

Case Study:

Richard is aged 45 and lives in Mablethorpe. He arrived in Mablethorpe towards the end of 2020, escaping domestic abuse from his partner in Leicester. Unfortunately, Richard was disqualified from driving whilst fleeing domestic abuse. He had a history of being employed in the motor trade and as a van driver, but without a driving licence, this career was no longer an option for Richard.

Richard was supported by Hope House Church in Mablethorpe who helped him to get his own flat. Richard started feeling more independent and started looking for employment. He had been volunteering for Hope House delivering food parcels during the Covid pandemic as he felt this is one way to pay back for all the help Hope House has given him.

Because of Mablethorpe's rurality, Richard needed to find a way to be able to travel to work and secured a second-hand bicycle. He applied to MAST in the hope a grant would help to have the bike repaired and make it roadworthy. He also needed a helmet. On taking advice on the costs of repair from a local cycle provider, it became apparent that the bike was not suitable as would need significant attention to make it roadworthy.

However, the cycle provider sold reconditioned cycles and Richard identified a suitable second-hand cycle to meet his needs which was fully serviced and reconditioned with new tyres and wheels, brake linings, saddle satchel, front and rear lights, and a helmet.

Richard was awarded £150 which covered the total cost of this cycle, which helped him attend an interview at a stain-glass studio where he secured permanent employment.



SWEF

Recognising the challenges that young entrepreneurs face in securing start-up grants to establish their businesses, the funder formerly known as the South West Enterprise Fund (now SWEF) has partnered with the Lincolnshire Community Foundation. Through this collaboration, LCF will distribute grants of up to £2,000 to aspiring entrepreneurs aged 18-30 across the county, helping them to launch and grow their businesses.

I'm so excited to begin my business venture with the help of SWEF funding. Thank you once again for all your input and help with making this happen. I really appreciate you all at LCF!

Chelsea – CS Beauty, Alford

Programmes: LocalMotion

18

The purpose of LocalMotion is to build a social, economic and environmental justice movement, by communities, for communities. The shared purpose is to reimagine a more just future for everyone by learning how all elements of societal structure, including funders, sectors and citizens, can work together equitably within a geographical place to positively disrupt the normal patterns and vicious cycles that are holding communities back. And for the collective learning to influence change at a local and national level.

Lincoln LocalMotion

Local vision – connecting people to inspire a flourishing future putting people at the centre of all decisions, focusing on:

Tackling poverty



Poverty Truth - removing hierarchical barriers to enable people to realise and activate the power they hold, individually and collectively, tapping into local strengths and passions. The aim is to move away from transactional experiences with faceless organisations and focusing on relationships, storytelling and social connection. This essential work takes time and is an investment in people that will not be tokenistic or pre-determined, undertaken by meeting people where they are; a person should not be defined by a negative experience or incident.

Children & Young People



Climate Hope



Underpinning this local vision – all involved have agreed to align to the following values:

Interdependence



Working together

Belief in the power of working together and using strong community ties to help drive change.

Equity



Fairness and inclusion

Social, environmental and economic justice – for all.

Transformation



Rethinking the status quo

To rethink the status quo and imagine a different way of doing things, where influence and decision making is shared more fairly.

Growth



Always learning

Unafraid of mistakes and failure, and agreement to share learning in the process.

Programmes: GLAP (Gainsborough Local Access Programme)

19

This is part of a national pilot in England and one of six places receiving funding from Access (The Foundation for Social Investment) and Big Society Capital. This is a 'test and learn' pilot programme aimed at increasing trade within the social economy sector.

It is testing out if the delivery of local enterprise development support and access to social investment through a place-based partnership enables greater shifts than would happen through a nation-wide programme. The shifts include: Can a local partnership support local voluntary and social enterprise organisations to have a more significant role in the local economy? Can locally delivered enterprise support and social investment

improve financial resilience for social economy organisations and achieve greater social impact? Can we achieve a better understanding of the social and economic contribution of the local social economy and what works to strengthen it? Lincolnshire Community Foundation has the key role of managing the enterprise development aspect of the programme and employing the Programme Co-ordinator.

What has been funded?

The enterprise development aspect of the programme offers access to specialist advice and support so that social economy organisations can identify and address their business development needs. In addition, enterprise development awards can be applied for to meet the costs of meeting the business need. The programme to date in Gainsborough has supported 31 social economy organisations and made 8 enterprise development awards. These awards have helped with start-up capital for a Boxing Club; refurbishment of a building for hiring out; product creation and marketing; capital to pilot a service that could be commissioned; feasibility on local ownership of a redundant building.

Aspirations

The focus of the programme is to improve the financial sustainability of local community/voluntary organisations and social enterprises. Our aspiration is to enable a system where the right money gets to the right group/organisation so that social and economic outcomes improve in Gainsborough. We are taking the learning from this programme into a pilot project in a different part of Lincolnshire to support economic development and social impact.

Case Study:

WOW Worthy Women CIC, Gainsborough

The GLAP funding is enabling WOW Worthy Women CIC to expand its services, both online and in-person, to reach more women, especially in underserved areas. By building partnerships and offering affordable resources, the organisation aims to increase its financial independence, scale its impact, and empower more women navigating menopause. The funding is expected to help WOW Worthy Women CIC transition into a self-sustaining social enterprise with long-term stability, allowing it to continue its mission of improving women's wellbeing and creating lasting social impact.

The GLAP funding is more than just financial support; it's a catalyst for transformation. It's enabling WOW Worthy Women CIC to transition from a small, grant-reliant organisation into a thriving, self-sufficient social enterprise.



Ways to Give

20

We constantly strive to facilitate and deliver outcomes for people across Greater Lincolnshire. Since our inception, we have distributed over £22M and the positive impact would not be possible without the support of existing and future donors. We want to highlight the possible ways to give to the Foundation, that will ultimately be for the benefit of others.

Corporate Giving

Every company we work with has access to our extensive local knowledge, advice on how to structure their CSR programmes and which initiatives will work for them – and which won't.

Many of our corporate donors have helped us by providing interesting venues for meetings or events, recommending us to their peers and sponsoring our events and activities.

We offer a bespoke service to our corporate clients, tailoring CSR programmes to meet their needs, and they can be as involved in their giving – or as hands-off – as they like.

How Can We Help...

- a personalised, professional service that meets your clients' wishes and means, while maximising benefit to the community;
- a range of philanthropy and giving options and opportunities to ensure your clients' gifts are tax efficient;
- knowledge of community needs and organisations across Lincolnshire that make a difference;
- expertise in providing funding and other charitable support.

Professional Advisors

Professional Advisors to partner help their clients make their charitable giving easy and rewarding, while supporting their financial planning goals. We work with solicitors, accountants, financial advisors and wealth managers to provide flexible options to suit your clients' wishes.

Whether it is related to the sale of a business, for tax purposes or estate planning, we are here to help and always welcome a conversation to talk through ideas or scenarios.

Personal Giving

Creating A Named Fund

Lincolnshire Community Foundation are specialists in creating and managing named funds for individuals. A named fund is simply a cost-effective alternative to a charitable trust. As we work closely with you in creating meaningful change in local lives and communities, your unique fund can focus on any cause or interests you may have. This entire process is personalised, safe and customised so your expectations are met whilst improving the lives of people within Greater Lincolnshire.

Types Of Named Funds

- The name of the fund or whether to remain anonymous
- The geographical area of benefit in Lincolnshire
- The causes that you wish to support in your grant making
- The level of involvement in terms of giving and selecting projects to fund

Leaving A Lasting Legacy

At Lincolnshire Community Foundations we are always humbled when people want to ensure that they're charitable giving paves the way for generations to come. Your Legacy will make a difference, no matter the size we work with you and your professional advisers to ensure that the fund is set up to meet your wishes as part of your will.

For more information and to discuss some of the benefits of leaving a legacy our team of experts would love to talk to you and guide you through the process.

Ways To Leave A Legacy

- **Pecuniary** – a specified sum of money
- **Specific** – a specified item, such as shares or property
- **Residuary** – all or part of the Estate after any pecuniary legacies have been paid
- **Reversionary** – the residue of the Estate after the death of a surviving spouse

Tax-Efficient Giving Tips:

Gift Aid

- By making a Gift Aid donation, charities can receive extra funds without any additional cost to you, as a UK taxpayer.
- The donation is treated as if basic rate income tax had been deducted, allowing charities to reclaim that tax from HM Revenue & Customs (HMRC).
- For instance, a donation of £10k with Gift Aid would mean the charity can claim £2.5k, making your total gift amount £12.5k.

Tax Relief for Higher Rate Taxpayers

- Higher rate taxpayers can claim back the difference between the higher rates of tax (40% or 45%) and the basic rate (20%) on the total donation value.
- For example, a 40% taxpayer donating £10k can reclaim £2.5k, resulting in a net cost of £7.5k to the donor, but the charity receives £12.5k.

Self-Assessment Giving

- If you complete a Self-Assessment tax return and are due a tax refund, you can opt to donate all or part of the repayment directly to a charity through 'Self-Assessment Giving' or 'SA Donate'.

Payroll Giving

- Contributions to charity via payroll giving can be made in any amount. Donations are given from your gross salary before tax, reducing the tax paid on the donation.

Giving in Your Will

- Leaving money to charity in your will can lower Inheritance Tax due from your estate. Options include a fixed sum or a portion of your estate designated to a charity.

Gifts of Assets

- Tax relief is available for gifts of certain shares, securities, and investments to charity. Income tax relief and capital gains tax relief may apply on qualifying investments given to a UK charity.

Donations by Limited Companies

- Your company's donation to charity is deductible from its total profits when calculating Corporation Tax. Corporate donations are not eligible for Gift Aid.

Gifts of Land, Buildings or Shares

- Your company may be eligible for Corporation Tax relief by donating land, property, or qualifying shares to a charity, or by selling them to a charity below their market value.

Transfer of Family Trusts

At a certain point, individuals or families may need to think about succession planning for their charitable trust. This period can be uncertain, but we are here to help.

By transitioning a charitable trust to LCF, you can rest assured that the trust's initial charitable objectives will be upheld and adjusted to meet evolving needs. We will handle the administrative responsibilities, enabling the remaining family members and trustees to stay engaged in decision making in any capacity they prefer.

How Can We Help...

- We will assist you in transferring your funds in a tax efficient manner, providing the flexibility to utilise various assets such as cash, shares and property.
- Collaborating with you, we will tailor the fund to adapt to evolving interests, allowing the focus of donations to shift as needed. This empowers family members to oversee, update and steer the fund over time while preserving your initial goals.
- This approach eliminates the necessity for trustee succession.
- Our services include handling all administrative tasks, charity Commission reporting, fund management and facilitating grant distributions.

Funds we've Managed this Year

22

We want to express our gratitude to all those individual, corporate, public and private donors who generously contributed funds to us this year, enabling us to make a difference.

Name of Fund	Name of Funder	Location	Type/No. Supported	Distributed
Bicker Wind Farm Trust	EDF Renewables	10 mile radius of Bicker Fen	Group / 8	£32,200
Big Lincolnshire Welcome Fund	Lincolnshire County Council	Lincolnshire	Individual / 134	£28,511
Bishop of Lincoln's Social Justice Fund	Diocese of Lincoln	Greater Lincolnshire	Group / 8	£16,121
Coastal Community Challenge	National Lottery	Mablethorpe, Trusthorpe, Sutton on Sea	Group / 5	£7,439
Cranswick Charitable Trust (groups)	Cranswick PLC	Greater Lincolnshire	Group / 6	£17,000
Cranswick Charitable Trust (individuals)	Cranswick PLC	Greater Lincolnshire	Individual / 40	£9,998
Evan Cornish Grassroots Fund	Evan Cornish	Greater Lincolnshire	Group / 36	£125,531
Flood Recovery Fund	East Lindsey District Council, Horncastle Lions, Horncastle Health and Wellbeing Fund, Horncastle Town Council	Horncastle, East Lindsey	Individual / 140	£29,085
Grange Wind Farm Community Fund	RES	10 mile radius of Tydd St Mary	Group / 16	£37,792
High Sheriff Youth Engagement Scheme	High Sheriff of Lincolnshire	Greater Lincolnshire	Group / 10	£50,500
Horncastle Health and Wellbeing Fund (Groups)		Horncastle, East Lindsey	Group / 5	£4,708
Horncastle Health and Wellbeing Fund (individuals)		Horncastle, East Lindsey	Individual / 1	£500
Household Support Fund (Boston)	Boston Borough Council	Boston Borough	Individual / 218	£59,482
Household Support Fund (E-Lindsey)	East Lindsey District Council	East Lindsey	Individual / 551	£127,470
Household Support Fund (S-Holland)	South Holland District Council	South Holland	Individual / 303	£76,473
Household Support Fund (S-Kesteven)	South Kesteven District Council	South Kesteven	Individual / 233	£50,979
Household Support Fund (W-Lindsey)	West Lindsey District Council	West Lindsey	Individual / 316	£73,450
Humber Gateway Community Fund	RWE	North East Lincolnshire	Group / 26	£81,000
Lacey Solar Farm Community Fund	Sirius	Lacey and Surrounding villages	Group / 10	£64,933
Make A Start (MAST)	LCF	Greater Lincolnshire	Individual / 14	£1,772
North Kesteven Lottery Fund	North Kesteven District Council	North Kesteven	Group / 13	£5,738
SWEF Enterprise Grants	SWEF	Greater Lincolnshire	Individual / 6	£6,649
Triton Knoll Offshore Community Wind Farm Fund	RWE	3km Anderby Creek or 5km of Bicker Fen	Group / 11	£36,787
UK Shared Prosperity GRASSroots Grants Fund (Boston)	Boston Borough Council	Boston Borough	Group / 7	£110,608
UK Shared Prosperity GRASSroots Grants Fund (E-Lindsey)	East Lindsey District Council	East Lindsey	Group / 20	£331,393
UK Shared Prosperity GRASSroots Grants Fund (S-Holland)	South Holland District Council	South Holland	Group / 14	£222,570
Ukraine Refugee Integration Fund	Lincolnshire County Council	Lincolnshire	Group / 4	£32,092
OTHER (Anonymous funding, discretionary funding)	AN Fund, LCF	Greater Lincolnshire	Both / 10	£2,113

Financial Statement

23

Statement of Financial Activities for the Year Ended 31 March 2024.

	Unrestricted funds £	Restricted funds £	Endowment funds £	Total 2024 £	Total 2023 £
Income and Endowments from:					
Donations and legacies	149,825	2,782,966	-	2,932,791	6,294,990
Charitable activities	373,765	10,000	-	383,765	41,314
Investment income	171,020	-	-	171,020	80,378
Total income	694,610	2,792,966	-	3,487,576	6,416,682
Expenditure on:					
Raising funds	(972)	-	-	(972)	(342)
Charitable activities	(368,350)	(2,060,781)	(60,863)	(2,489,994)	(748,558)
Total expenditure	(369,322)	(2,060,781)	(60,863)	(2,490,966)	(748,900)
Gains/losses on investment assets	(19,568)	-	396,281	376,713	(17,909)
Net income	305,720	732,185	335,418	1,373,323	5,649,873
Gross transfers between funds	61,381	(18,563)	(42,818)	-	-
Net movement in funds	367,101	713,622	292,600	1,373,323	5,649,873
Reconciliation of funds					
Total funds brought forward	1,833,816	583,342	3,232,715	5,649,873	-
Total funds carried forward	2,200,917	1,296,964	3,525,315	7,023,196	5,649,873

Our People

None of this could be possible without a committed Board of Trustees and effective team who have bags of empathy.

Lincolnshire Community Foundation Team



Sue Fortune
CEO



Helen Kearsley-Cree
Head of Strategy & Development



Claire Edwards
Head of Communications,
Marketing & External Affairs



Helen Cater
Grants Manager



Katie Littlewood
Grants Manager



Hayley Crawford
Grants Manager
& Finance Officer



Cavan Collins
Grants, Enterprise
& Development Officer



Aaron Bailey
Data, Research
& Environment Officer

Trustees



Paul Scott
Chair



Lizzie Milligan-Manby
Vice-Chair



Stephen Ryder
Chair 2021-24



Paula Baumber
Trustee



John Maitland
Trustee



Lynnette Pryke
Trustee



Danielle Budworth
Trustee

Auditors:

Forrester Boyd
26 South Saint Mary's Gate,
Grimsby, North East
Lincolnshire DN31 1LW

Accountants:

Simon Moss & Co
34A South Gate, Sleaford,
Lincolnshire NG34 7RY

Investment Managers:

CCLA, One Angel Lane,
London EC4R 3A

Financial Advisor:

Money Minder
The Old Ale House, 41 Boston
Road, Sleaford NG34 7ER

Acknowledgement to Panel members:

Staff and Trustees would like to thank volunteer panellists across the County who ensure our grant processes are fair, transparent, and equitable. Their input ensures we deliver greater positive impact where it's needed most.

Our Trusted Connections



CITY OF
Lincoln
COUNCIL



SOUTH
KESTEVEN
DISTRICT
COUNCIL



North Kesteven
DISTRICT COUNCIL



Department
for Work &
Pensions



UNIVERSITY OF
LINCOLN





Telephone: 01529 305825

Email: info@lincolnshirecf.co.uk

Address: Mill House, Carre Street,
Sleaford, Lincolnshire NG34 7TW

Charity Number: 1196448