



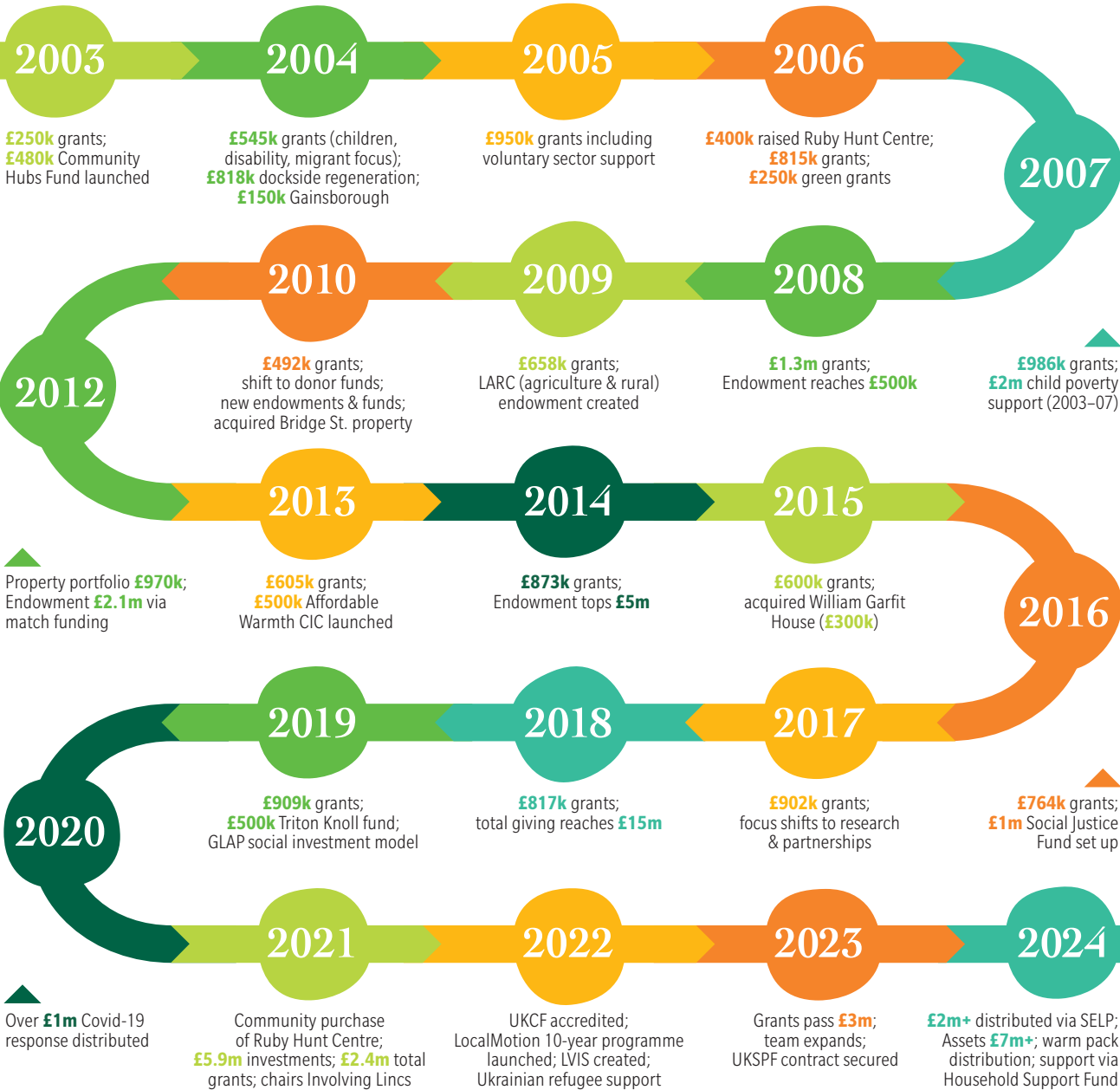
# Making Every Grant Count

ANNUAL REVIEW 2024/25



Lincolnshire  
COMMUNITY FOUNDATION

Staff and Trustees at Lincolnshire Community Foundation (LCF) remain committed to supporting community organisations that deliver meaningful, practical, and effective impact as well as individuals experiencing poverty or those striving to move forward with their lives. We believe that when people live, work, and give together, real change can happen for people and communities. Since our inception in 2002, we are proud to report we have distributed over £24M to support positive outcomes across Lincolnshire.



## Contents

01	Welcome from the Chair & CEO	15	Household Support Fund	27	Programmes
02	Lincolnshire Today	16	Evan Cornish Grassroots Fund	30	Spital
04	Beneficiaries	18	Bishop of Lincoln's Social Justice Fund	31	Lincs Agricultural Society
06	Out and About	19	High Sheriff Fund	32	Ways to Give
08	Making a difference together	20	Birchwood Big Local	34	Funds we've managed
09	Identifying where the need is	22	MAST	35	Financial Statement
10	UKSPF GRASSroots Grants	23	SWEF	36	Our People
14	Our Ukraine Response	24	Community Benefit Funds		

# Welcome from the Chair & CEO

1

Our aim is to improve the lives and wellbeing of ordinary people throughout Greater Lincolnshire. We seek to achieve this through building long term endowment, grant making, social investment, advice and practical support: we listen, convene, collaborate, co-create and fund.

We are proud to present LCF's Annual Review, showcasing the breadth and impact of our work over the past year. While it's important to reflect on *what* we do and *how* we do it, we remain guided by our core purpose: tackling poverty and inequality, always putting at the heart of what we do.

We're committed to being the best grant-maker we can be, listening, learning and improving to ensure our processes open and accessible. By engaging with community groups, we build trust and strong relationships with those behind the projects.

This year, we distributed over £4.8M, supporting 325 projects and providing funding to 5,456 households. This impact wouldn't be possible without our dedicated, compassionate team who consistently go above and beyond.

We continue to promote a culture of philanthropy, working with donors, professionals, and partners across sectors to deliver flexible, transformative funding that helps position LCF as a force for positive change.

We're deeply grateful to our donors, long-standing and new, and to our local authority and voluntary sector partners for their trust and collaboration. Above all, we thank the individuals leading the community organisations we've supported in 2024/25 – the true catalysts for change. Looking ahead, we acknowledge the ongoing challenges communities face. Our commitment remains strong: to support the development of resilient, thriving communities across Lincolnshire.



Sue Fortune – CEO



Paul Scott – Chair

£4.8m

Distributed

325

Projects supported

5,456

Individuals helped

£3.5m

Endowment

£420k

Programmes

## Our Vision

To create a county where every community flourishes, people are healthy, hopeful and resilient, supported by lasting investment, bold giving and transformative support.

## Our Mission

To collaborate with people and businesses motivated to improve lives, delivering exceptional grant making and unlocking resources to strengthen communities: **we listen, convene, collaborate, co-create and fund.**

“

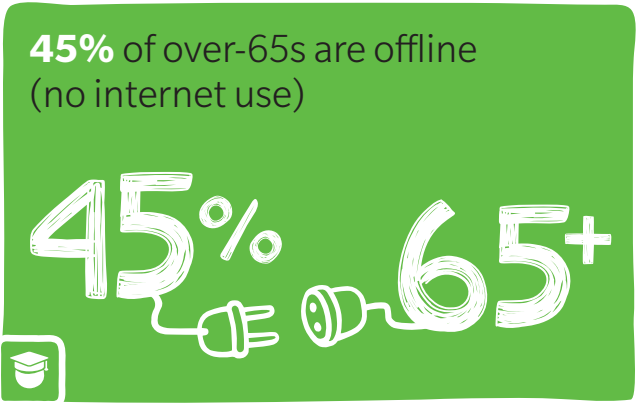
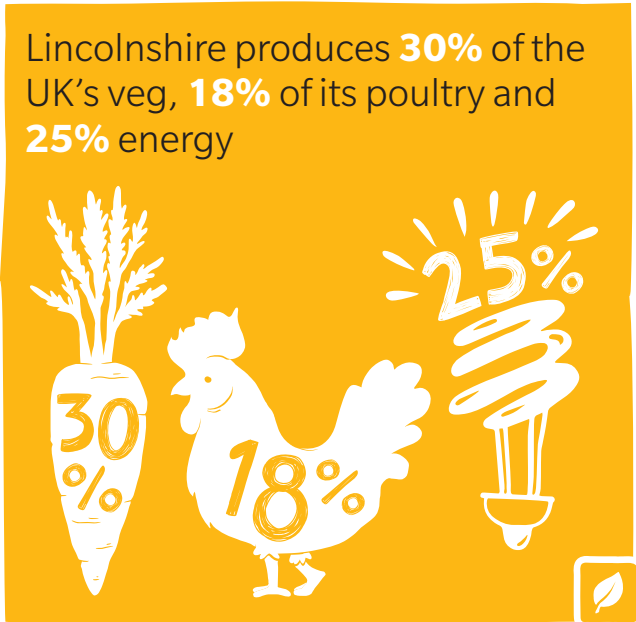
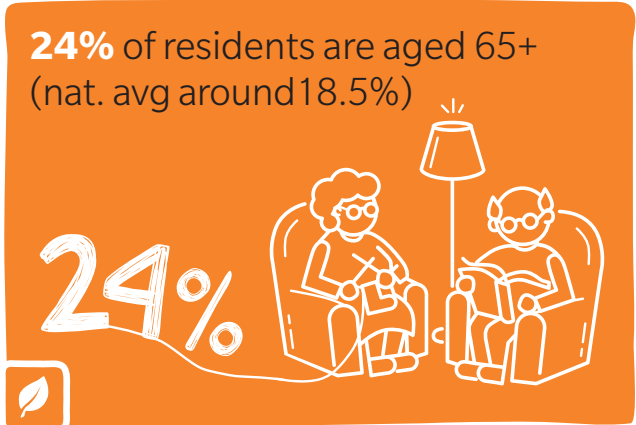
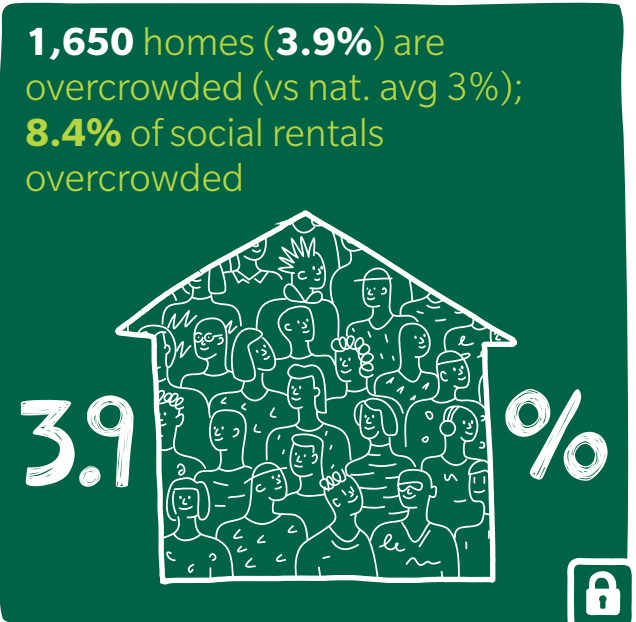
“Colleagues at Lincolnshire Community Foundation never fail to astound me with their speed, efficiency, and the quality of their work. I'm incredibly grateful that the three Councils benefit from such diligent and professional support from the team at LCF.”

Saul Farrell, Senior Programme Manager – South and East Lincolnshire Council's Partnership

”

# Lincolnshire Today

Lincolnshire comprises a mix of rural, coastal and urban areas, offering a great environment for living and working. However, some people face significant challenges and barriers in accessing local services and opportunities, affecting their quality of life.

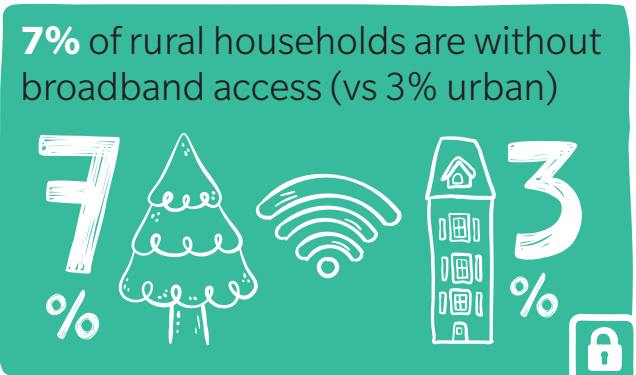
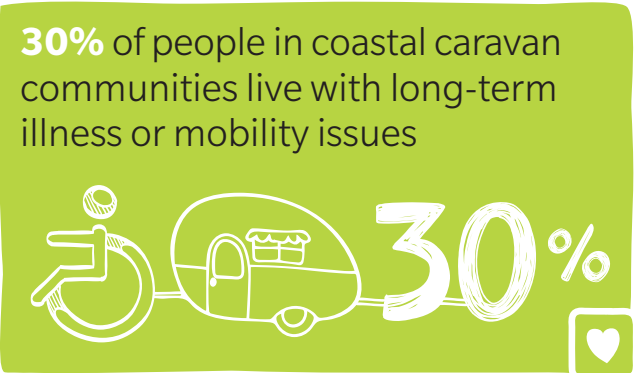
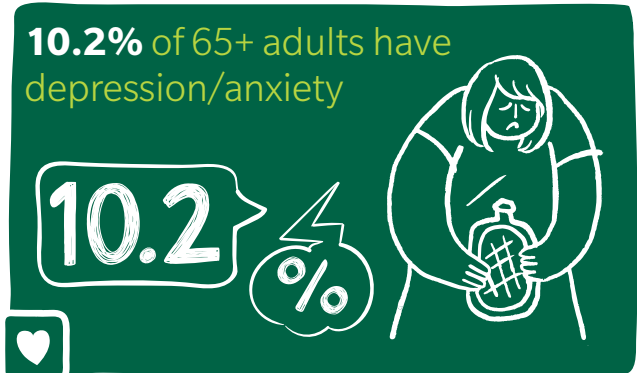
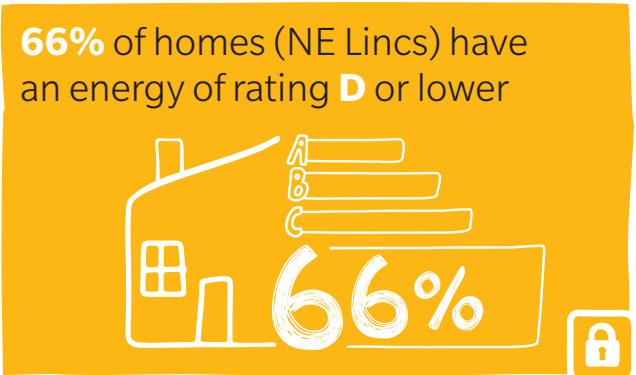
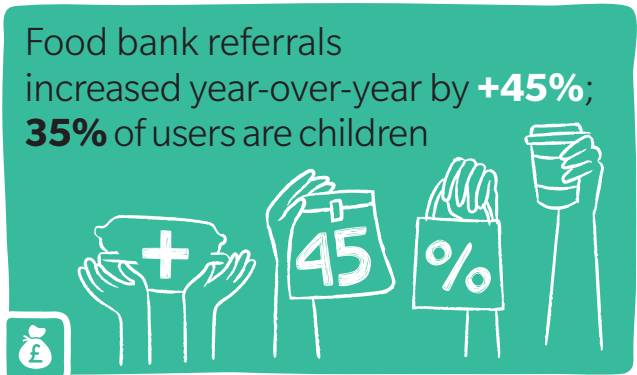
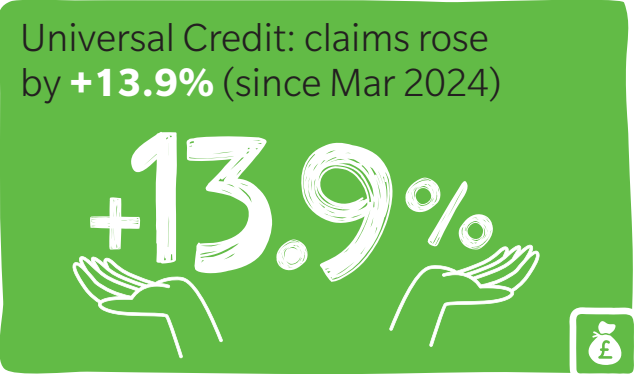
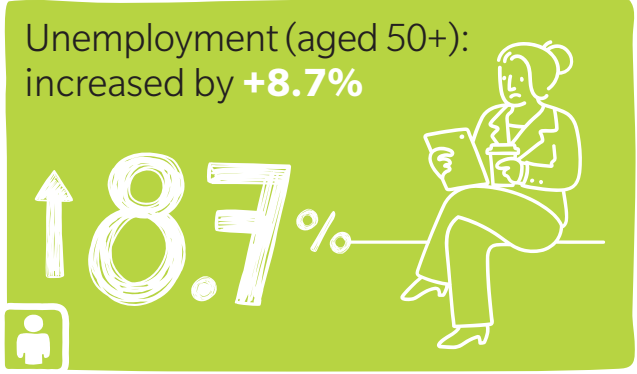
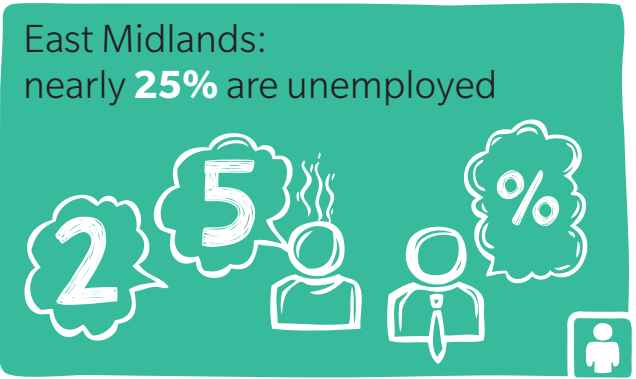
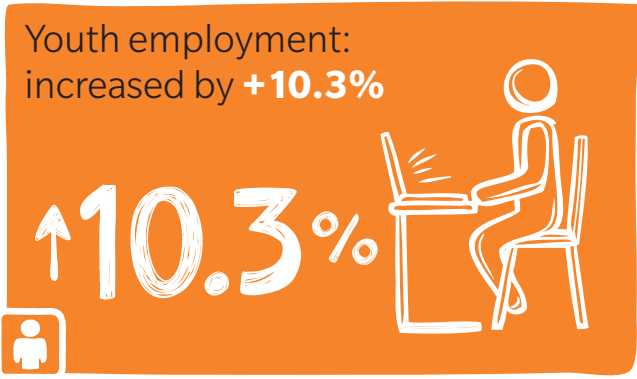


The 7 Domains of poverty are:

- Income
- Employment & Skills
- Barriers to housing
- Environment
- Education
- Health & Disability
- Crime

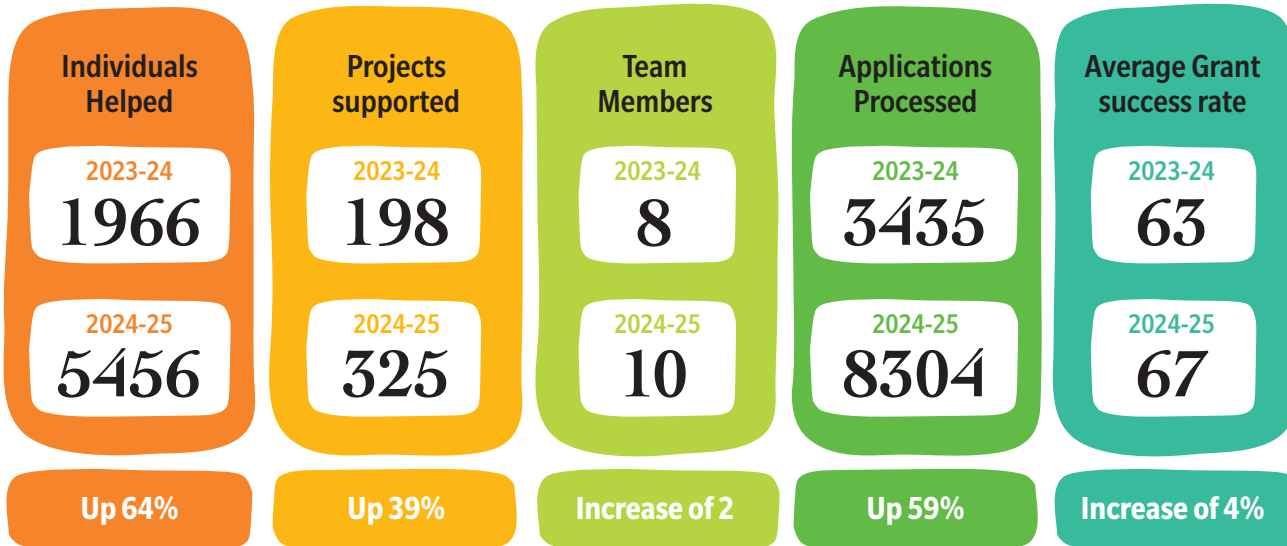
2

3





# Beneficiaries



"The Committee have very much enjoyed our involvement with the UKSPF Flash Fund and would like to send our thanks for allowing us to build community regeneration, engagement and physical activity."



"The communication with LCF has been wonderful. Before applying for a grant I was able to discuss what we wanted to achieve so we could make sure we met what we wanted to see in the park whilst meeting your hopes as well."



4

5

"Your Generosity and Help has ensured our facility continues to improve, and that, is a positive for the town and the local people."



"Well done and THANK YOU to LCF for all the support you do in Lincolnshire. We at Acts Trust are so grateful for the support and friendship."



"The mill volunteers are extremely grateful for the grant which will have a lasting impact on the continued viability of the mill. The benefit of the additional heating has already made some impact in the tea room area."



"Many thanks for your help, we won the bid for Little Hale Chapel and we're over the moon! I nearly gave up trying to download the form so you were a godsend, many thanks!"



"The process was made really easy. Brilliant communication by the LCF Team who were always at the end of the phone and came to visit providing valuable advice."



"Thank you to the LCF team for their clear guidance and help getting our project up and running. It's been a very positive experience for our community."





# Out & About

Grant making is more than just assessing applications, it's about engaging with communities. Our team value the opportunity to move from behind their desk to meet the people who drive organisations forward to offer guidance, encouragement and practical support. We also play an active role in wider strategic initiatives across the County, including the Financial Inclusion Partnership, Involving Lincs and support for warm spaces, enabling them to influence, share insights, deliver change and strengthen the impact of our work.

6

7





# Making a difference together

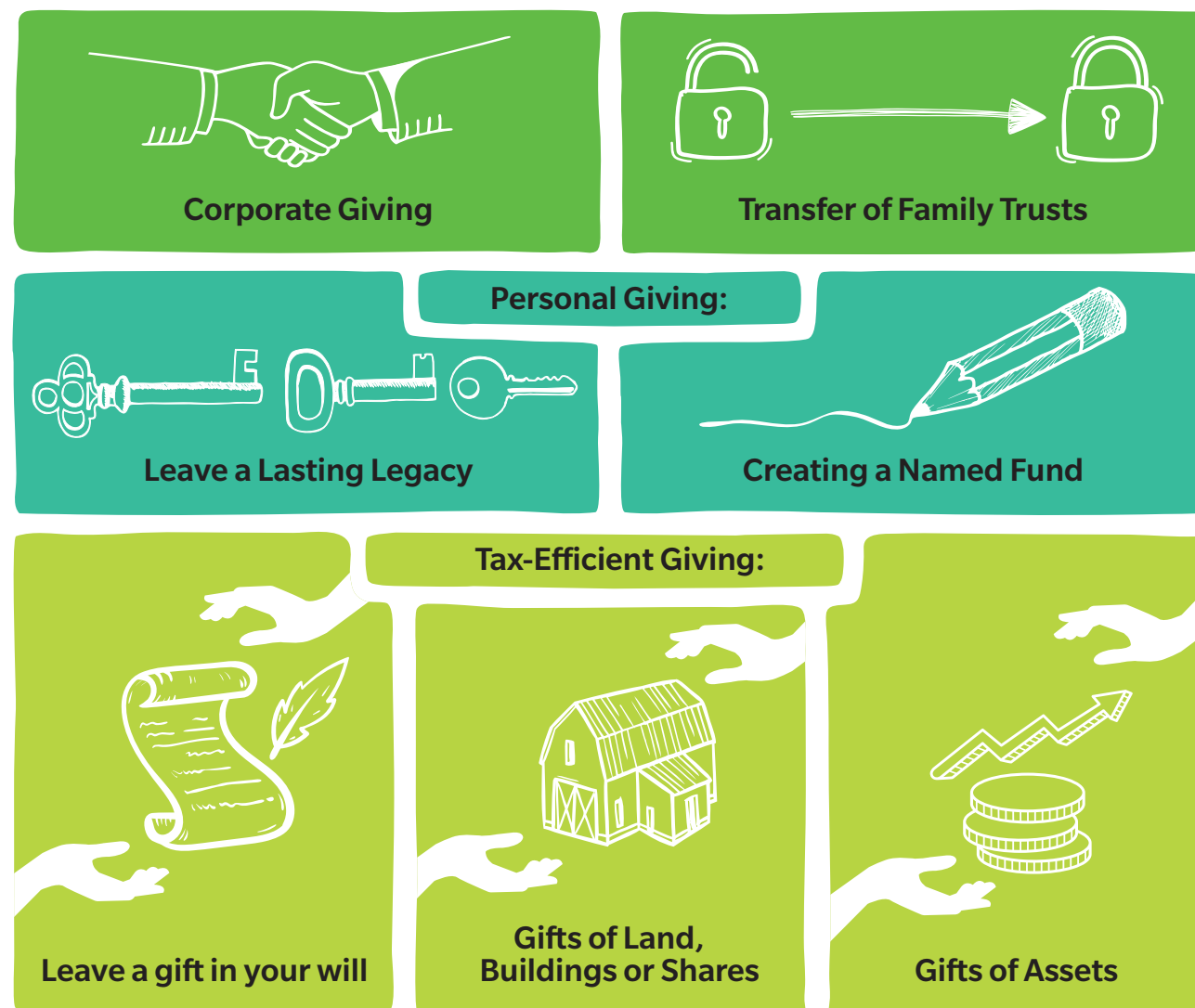
The Foundation is proud to have invested over £4.8 million to support hundreds of community-led organisations. This funding has significantly improved access to local services, helped secure the future of vital community assets, and enabled the delivery of essential support across both urban and rural areas.

To ensure our funding achieves the greatest possible impact, we draw on local knowledge, lived experience, and data from the Lincolnshire Visual Intelligence System (LVIS), a powerful tool that highlights existing and emerging needs.

There is still much to do, particularly in areas of highest need, such as Scunthorpe, West Lindsey, and South Kesteven. We welcome conversations with potential donors, whether you're a mission led business committed to deliver social impact, a philanthropist with a desire to do good, or a public body looking to invest in long-term community change.

## Details of the different ways to give

Further details on page 32 – Ways to Give.



8

9

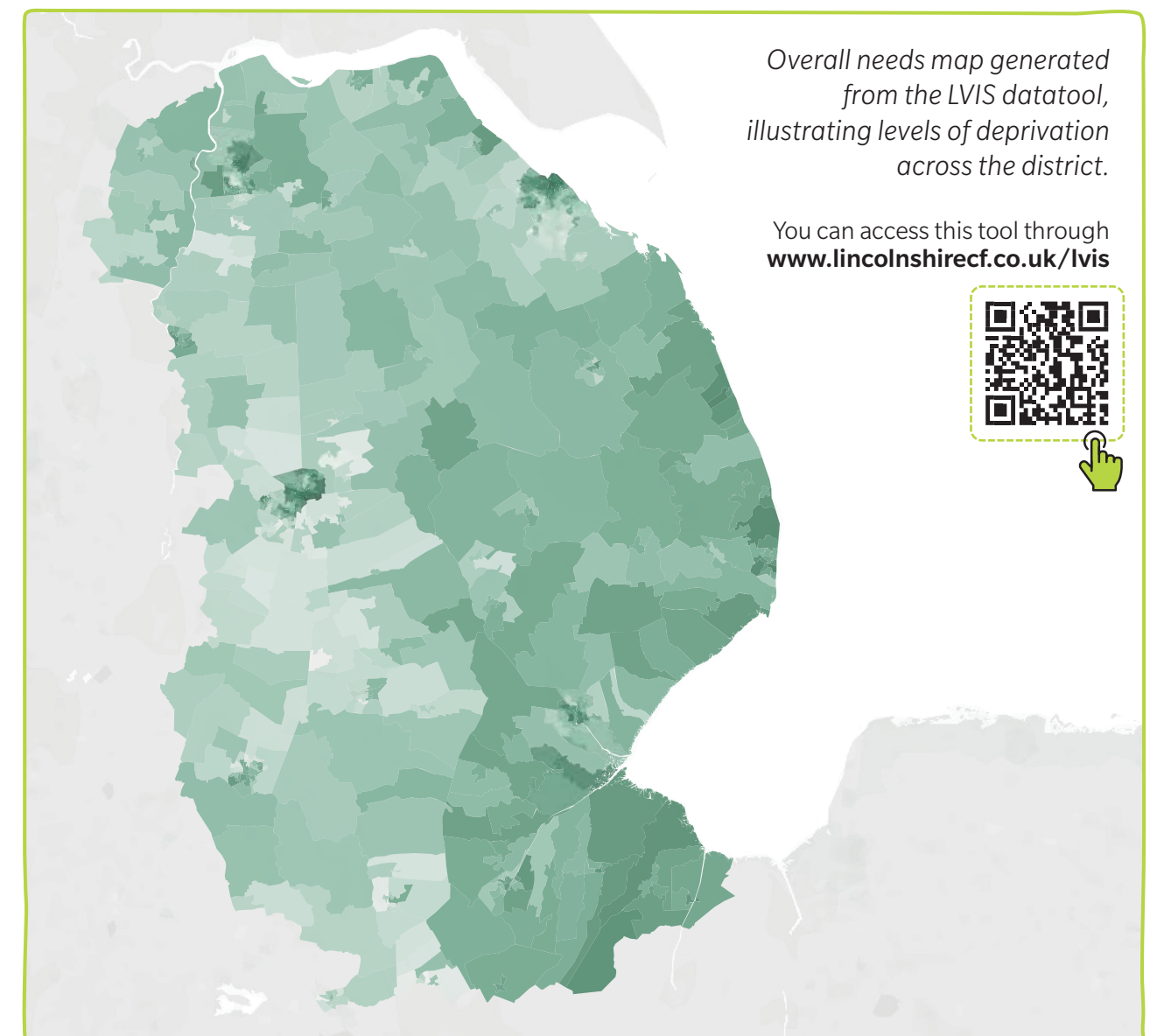
# Identifying where the need is

Understanding local need is key to effective grant-making. That's why we combine on-the-ground insight with data-driven tools to guide our decisions. One of our most valuable resources is the **Lincolnshire Visual Intelligence System (LVIS)**, a powerful platform that helps us and our partners identify where support is needed most across Greater Lincolnshire.

LVIS is a free, interactive tool that uses open-source data to visually identify areas of need across Greater Lincolnshire down to street level. Covering sixteen themed datasets, LVIS enables users to search by Local Authority District and pinpoint pockets of deprivation, helping to inform decisions and support targeted investment.

voluntary, public, and private sectors to deliver more impactful, locally focused solutions. By combining this insight with the strong relationships we've built within our communities, we enhance the intelligence behind our grant making and ensure resources are directed where they're needed most.

Designed to highlight where support is needed most, LVIS strengthens the case for funding applications and empowers the



# UKSPF – GRASSroots Grants

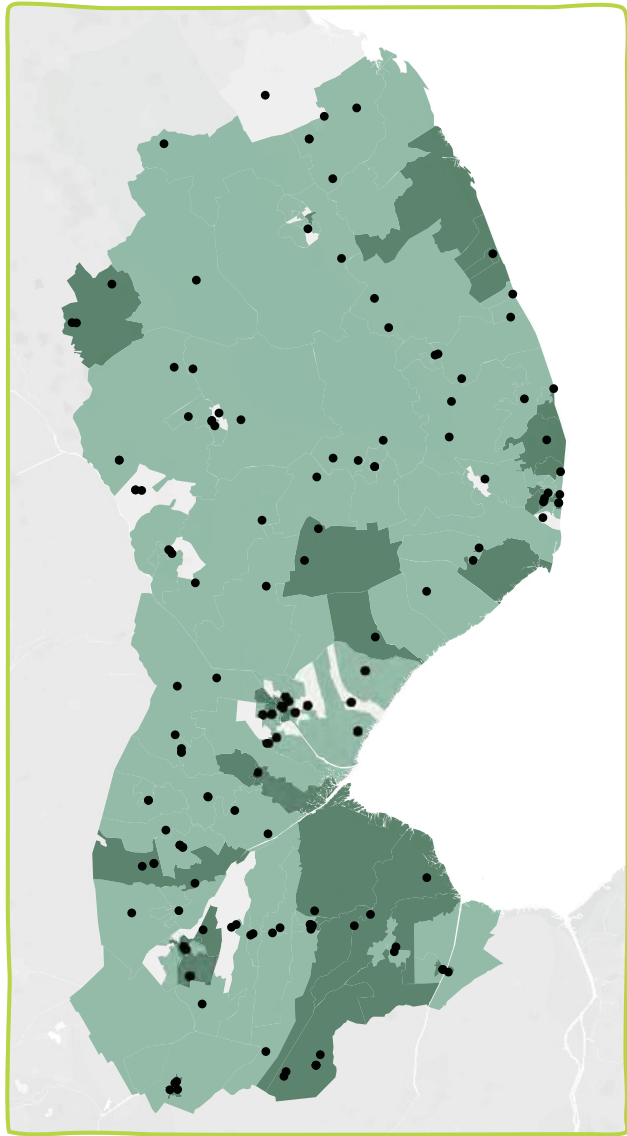
Since July 2023, LCF has awarded £2.1m to 143 organisations/groups, enabling communities to improve and refurbish community spaces and lay the foundations for long-term growth at neighbourhood level. This funding is helping to strengthen the social fabric of our communities by improving local hubs, creating welcoming spaces, and supporting opportunities for social connections to develop and thrive. The aim is to build pride in place, foster inclusion, and create stronger, more resilient neighbourhoods.

We're pleased to share a glimpse into the positive outcomes already emerging across communities in East Lindsey, Boston Borough, and South Holland. These successes demonstrate the real difference this programme is facilitating.

We are delighted to have been invited to continue this important work into 2025/26 and remain committed to approaching the year ahead with the same enthusiasm, care, and reliability ensuring communities are more equitable.

2024-25		
District	Projects	Awarded
Boston	19	£241,440
East Lindsey	44	£688,100
South Holland	34	£513,214
Total	97	£1,442,754

Total		
District	Projects	Awarded
Boston	50	£738,070
East Lindsey	27	£358,913
South Holland	66	£1,024,401
Total	143	£2,121,384



10

11

# UKSPF – Boston Borough

Working with Boston Borough Council, we've seen how local investment can transform community spaces and empower people, bringing new life, pride, and opportunity to the heart of communities.

## Case Study:

### Leverton Church Hall, Leverton

A **£24,999** grant enabled the full renovation of Leverton Church Hall, transforming it into a warm, accessible, and welcoming hub. Upgrades included toilets, kitchen, flooring, curtains, furniture, new doors, heating, and a wheelchair ramp.

Now compliant with modern standards, the hall is better equipped to serve the community. Energy-efficient improvements to the walls and heating system have reduced costs, freeing up resources for more activities. New groups have started using the space, with coffee morning attendance up by 40% and over 240 people at the new Winter Bazaar.

The renovation has improved perceptions of the hall, boosted event interest, and led to new volunteering and increased engagement, reflecting renewed community pride.

"The coffee mornings have really taken off since the improvements, the numbers have increased by 40% and the space is warm, welcoming and practical."



## Case Study:

### Volunteer it Yourself, Boston

Funding supported the renovation of a Boston community centre while giving young people the chance to gain trade skills, hands-on experience, and recognised qualifications through the VIY programme.

The project led to 150 more monthly visitors, inspired 16 new volunteers, and sparked a new community-led activity. A survey showed 76% of respondents rated the improved centre as "good" or "very good."

Thirteen young people earned City & Guilds accreditations, with exit surveys showing strong personal and professional growth. Participants reported increased confidence, teamwork, problem-solving, wellbeing, and awareness of employer expectations. The project improved a valued space and empowered young people to shape their future through practical, meaningful involvement.



"92% of the young people involved said they felt more confident about getting a job in the future thanks to the skills gained through VIY, and every single one described the experience as positive."





# UKSPF – East Lindsey

In partnership with East Lindsey District Council, we're proud to support projects that celebrate inclusion, expand access, and turn local visions into reality, helping communities thrive and grow stronger together.

12



## Case Study:

### East Coast Pride, Skegness

A Grant of **£15,000** supported the launch of the first East Coast Pride event in Skegness, a free and inclusive celebration of equality and diversity. The event welcomed over 2,000 people, raising awareness of LGBTQIA+ services and providing a safe and joyful space for all.

The event brought new visitors to the area, boosting tourism and showcasing the vibrancy of the local community. It also created meaningful connections, increased visibility for important services, and helped foster long-term engagement beyond the day itself. Organisers continue to collaborate with local allies and maintain momentum through media outreach and community follow-up. This marked a significant step forward in representation, celebration, and access to support for LGBTQIA+ people across Lincolnshire.



"Without this grant, it would simply not be possible."



## Case Study:

### Hensell Goat Rescue Care Farm, Sutton on Sea

Funding of **£21,873** has enabled the siting of a new community classroom on the farm, complete with a disability-friendly toilet and kitchen area. The new facility has dramatically increased the organisation's ability to welcome a wider range of visitors and groups.

Since being installed, the classroom has been in daily use and has played a central role in expanding the service offer. Bookings have surged, and the site has hosted several successful events including a Family Fun Day (1,000 attendees), a dog show and table-top sale, and participation in National Open Farm Day.

The new facility has strengthened the farm's community presence, made services more inclusive and helped turn long-held ambitions into reality.



"We were showered with compliments for having the wonderful facility, which we always praise the UKSPF for. Through this funding, we've made what was a pipedream into a reality, something we could never have achieved without the help and guidance from Lincolnshire Community Foundation."



# UKSPF – South Holland

13

Through our work with South Holland District Council, we're seeing how local ideas, energy, and creativity can transform spaces and bring people together, building pride, connection, and lasting community impact.



## Case Study:

### Flinders Founders, Donington

Funding supported the extension and resurfacing of Donington's BMX track, making it safer and more engaging for young people. The improvements were shaped by users, giving them pride and ownership.

The upgraded space sparked leadership and community spirit. Ben Lee, a local rider, now runs competitions, helps others learn tricks, and designs posters, bringing peers together through BMX.

Young people are proud to use and maintain the space, showing how involving local voices builds stronger, lasting connections.



"I want to give back to my community, so I got involved with Flinders Founders. I've helped at open days, planned competitions, and even designed posters. I love doing it and want to do more in the future."



## Case Study:



### Holbeach Amateur Theatrical Society, Holbeach

A **£12,000** grant allowed HATS to buy sound and lighting equipment, cutting hire costs and making performances more affordable and accessible for over 760 people.

The upgrades improved show quality and drew in new members. Eric, an older man facing loneliness, was welcomed after calling out during a performance. He later joined rehearsals and took a small role, finding joy, connection, and community.

He now attends regularly, showing how creative spaces can transform lives.



## Case Study:



### Friends of Spalding Railway Station, Spalding

An **£18,750** grant helped volunteers improve Spalding Station with tools, benches, planters, storage, and murals, making it safer and more welcoming.

Once grey and neglected, the station now features vibrant gardens and seating. The transformation has lifted public perception and renewed community pride.

The project turned a tired public space into one that reflects local care, connection, and identity.



"Spalding Railway Station has never looked so good, I am no longer ashamed to pick up visitors from our railway station."





# Our Ukraine Response

During times of crisis, it can be difficult to know where to turn for support. That's where Lincolnshire Community Foundation stepped in. With deep roots in the community and strong relationships with local organisations, we are uniquely placed to respond quickly and effectively. When war broke out in Ukraine in February 2022, displacing millions, we immediately launched the Big Lincolnshire Welcome Appeal, raising funds to help 57 families and individuals with essential items as they began new lives in our county.

Recognising the urgent and ongoing need, Lincolnshire County Council entrusted the Foundation to distribute further support through the Homes for Ukraine scheme, first to individual refugees and families, and later to community organisations across the county through the Ukraine Refugee Integration Fund (URIF). Generous contributions also came from Cranswick PLC and local photographer Martha Woodward, enabling us to extend our reach and impact, providing practical, targeted assistance to those most in need.

This year, we've continued our efforts by supporting **11 community projects** through the Ukrainian Refugee Integration Fund (URIF) and processing **106 individual applications** to the Big Lincolnshire Welcome Fund. As needs have shifted from emergency basics to long-term integration, our focus has evolved, supporting language skills, employment, cultural connection, and mental wellbeing. We remain committed to standing alongside Ukrainian guests as they rebuild their lives in Lincolnshire.



## Case Study:

### Ukrainian Cultural Centre Lincoln

Fund: Ukrainian Refugee Integration Fund – £9,000

The Ukrainian Cultural Centre Lincoln (UCCL) supported over 150 refugees in Lincoln and nearby areas through a **£9,000** grant from the Ukrainian Refugee Integration Fund. The funding enabled a vibrant year of events including cultural celebrations, trips, workshops, Pilates, choir and monthly socials, all aimed at boosting wellbeing and integration.

Education was central, with Maths tuition and English conversation classes for all ages. One 15-year-old, for example, improved his GCSEs and secured a place at Lincoln College.

With stronger community ties, increased confidence among participants, and new partnerships, UCCL plans to build on this success well beyond the grant.



*"Your generosity has helped me purchase essential items for my family and has made a huge difference in our lives. Your award has also helped us to integrate into Lincolnshire and made us feel more settled in our new home. Your kindness has truly been a blessing to us, and we cannot thank you enough."*

**Mariia BLWF recipient**

#### URIF (Groups)

##### Supported

(Since 2022)

**30**

2024-25

**11**

##### Funded

(Since 2022)

**£214,489**

2024-25

**£97,489**

#### Big Lincolnshire Welcome Fund (Individuals)

##### Households

(Since 2022)

**544**

2024-25

**106**

##### Funded

(Since 2022)

**£150,255**

2024-25

**£22,158**

14

15

# Household Support Fund

Supporting Vulnerable Households Across Lincolnshire

The rising cost of living continues to impact households across Lincolnshire, placing increased pressure on individuals and families already facing financial hardship. Many residents are struggling with essentials such as food, energy, and housing costs, particularly those who do not qualify for means-tested benefits yet still live on limited incomes.

To address this need, the UK Government extended the Household Support Fund until March 2026, enabling local authorities to provide targeted support to vulnerable households. As part of this effort, we are proud to work in partnership with five District Councils; East Lindsey, South Holland, Boston Borough, South Kesteven, and West Lindsey, to deliver funding where it is needed most.

Building on previous success, we continue to prioritise households who fall outside of mainstream welfare support but remain at significant risk of hardship. This includes pensioners, single-parent families, carers, disabled individuals, and people living alone. Support is provided through supermarket vouchers, helping recipients manage rising food and household costs during particularly difficult times.



For further information about our work and ongoing impact, visit: [www.lincolnshirecf.co.uk/hsf](http://www.lincolnshirecf.co.uk/hsf)

**6,932**

Households benefitted  
Since 2022

**5,307**

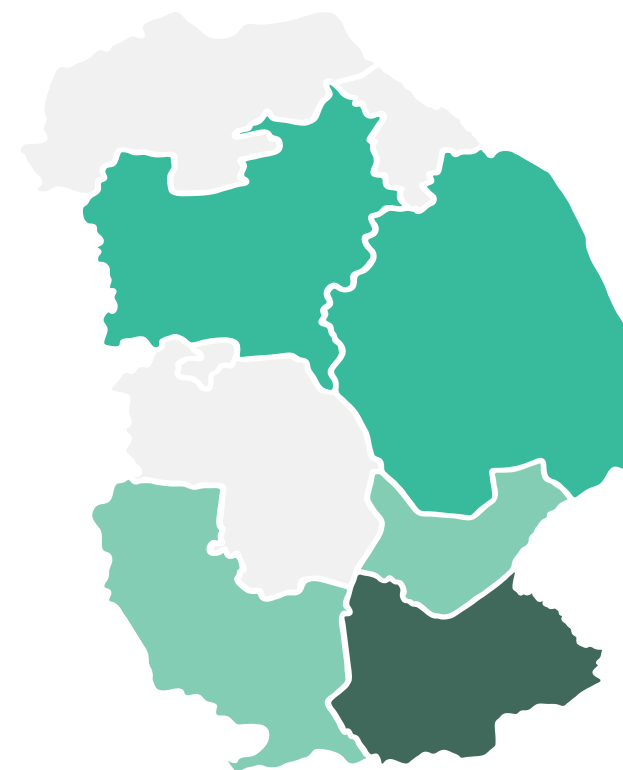
Households benefitted  
2024-25

**£1.35m**

Distributed  
Since 2022

**£963k**

Distributed  
2024-25



Child poverty increased by **+10.1%** across the county

The Avg. heating bill in Lincolnshire is **£739**, **£88** above England & Wales avg.

**8,000+** children eligible for Free School Meals



*"I am really truly grateful for that support. Thank you to all of you, who work tirelessly to help people like us. The difference it makes is appreciated more than you could know."*

The distribution of funding allocated within the districts that requested us to disperse funding.



# Evan Cornish Grassroots Fund

*A partnership creating lasting impact*

LCF has, since 2011, been working alongside the Evan Cornish Foundation to improve the lives of 1000's of people across Lincolnshire. Their father, Evan Cornish, established packaging company, Linpac based in Louth, in 1959. The family first donated £500,000 as part of a government match challenge, this was doubled and subsequently distributed over a five-year period to community organisations.

These organisations were selected on their ability to demonstrate they met the fund priorities: alleviating food poverty, providing advice and support, creating social cohesion, supporting older people or those who are, or faced, becoming homeless. Subsequent to this generous donation, the family have continued to contribute and has donated a further £550,000 enabling the Foundation to fund vital work including support for survivors of

domestic abuse, art therapy for people in recovery, food security projects (food bank, community grocery, cooking on a budget, community growers etc), benefits advice, intergenerational activity, and so much more. We are, and remain, grateful for the opportunity to fund and showcase some amazing projects that help some of our most vulnerable residents.

16

17

## Case Study:

### Moving Forward, Lincoln

Moving Forward in Lincoln received Evan Cornish Grassroots funding to rent a safe, private space and expand support for women affected by domestic abuse.

The new hub increased session frequency and created a free, welcoming environment where women built connections and launched member-led initiatives like volunteering, therapy exchanges, and study groups. A pantry was also set up to help those facing hardship.

Events included fundraisers, painting, poetry, and trauma-informed sessions, alongside outings like pantomimes, discos, wellbeing days, and a Women's Rights march. Impacts included one member exhibiting art and another meeting an MP to raise awareness of domestic abuse.

*"Whilst I wish I hadn't gone through what I have, I wouldn't be here now enjoying these amazing experiences you give us and feeling so empowered by this group."*



## Case Study:

### Grimsby Food Kitchen

Grimsby Food Kitchen used funding to continue providing essential support for people facing homelessness, poverty, addiction, and isolation.

With the help of 8 committed volunteers, the team delivered hot meals, rehabilitation support, and hospital visits, offering a lifeline to those in need, particularly during the colder months.

Around 100 people benefitted from the project, gaining regular access to food, warmth and compassionate care. The support not only met immediate needs but also reduced loneliness, improved wellbeing, and restored dignity for many of the individuals supported.

The funding enabled this vital service to continue operating at a time when many are struggling to access basic essentials and support networks.



*The Evan Cornish Foundation (ECF) is proud to work with Lincolnshire Community Foundation (LCF) through the Evan Cornish Grassroots Fund. This long-standing partnership makes supporting local grassroots initiatives seamless and effective. LCF's deep knowledge of community needs and efficient grant processes ensure our funding reaches those who benefit most. From small volunteer-led projects to vital community services, the impact is tangible, and working with LCF is consistently professional, collaborative, and rewarding. We value this enduring relationship and the positive change it brings across Greater Lincolnshire.*

Laura Thomas, Grants Manager



## Case Study:

### Furnichurch, Mablethorpe

Furnichurch in Mablethorpe received Evan Cornish Grassroots funding to hire a part-time Administrator.

The group supports people in need by collecting and delivering donated furniture and providing food to low-income households, free for urgent cases or for a small donation.

The new Administrator, working three days a week, improved contact with donors and referrals, tailoring food parcels to individual needs. The role also helped secure new funding, including a three-year grant to cover the post.



## Case Study:

### The Forge Project, Scunthorpe

The Forge Project is using funding to support their Cook's salary and buy fresh food, ensuring daily meals remain available for people facing homelessness and hardship.

Supporting over 400 people a year, the service offers not just meals but a safe, welcoming space. The Cook also runs a six-week volunteer programme, helping participants gain confidence, structure, and kitchen skills while working toward a Level 2 Food Hygiene Certificate, with some progressing to further training or volunteering.

With food costs rising and donations dropping, this support is vital to keep the Forge providing care, nourishment, and opportunity to those most in need.

*"This project is more than a meal – it gives people purpose, skills and the chance to feel part of something again."*





# Bishop of Lincoln's Social Justice Fund

Since 2014, LCF has partnered with the Diocese of Lincoln to deliver the Bishop of Lincoln's Social Justice Fund which supports grassroots projects that tackle poverty, isolation, and inequality across the county.

18

## Willoughby Road Allotments, The Edible Academy, Boston

Funding expanded café facilities at Willoughby Road Allotments with outdoor seating, indoor furniture and kitchen equipment, boosting comfort, capacity, and visitor numbers, even in warmer weather.

Used regularly by local residents, NHS staff, and plot holders, the café now offers a calm, welcoming space for people needing a break, especially staff and visitors from the nearby Pilgrim Hospital.

A new link with the hospital Chaplain has helped raise awareness and encourage greater community use, making the café a more vibrant, accessible hub that supports connection and wellbeing.



*"The additional seating has made a big difference. It's great to have a space where hospital staff and local people can come together and just take a moment to breathe."*



### Case Study:



### Case Study:

## Gainsborough Men's Shed, West Lindsey

Funding enabled Gainsborough Men's Shed to introduce creative activities like airbrushing, pyrography, resin moulding, whittling, and model-making. These low-cost sessions have helped people in a deprived area build skills, confidence, and social connections.

Over 100 members now take part, thanks to new tools that make activities more inclusive and flexible, supporting wellbeing, reducing isolation and giving renewed purpose.

The project has also led to partnerships, including with the Anglican Church and Disability Social Network, where a joint art project is under way.

For many, the Shed offers not just creativity, but also community, companionship, and hope.



*"The Shed has brought me out of a dark place, no doubt about it. I feel like a different person."*



*The panel has been a joy to work with, and I believe we have been able to make a significant difference to so many different lives in so many different places.*

The Rt Revd Dr David Court – The Bishop of Grimsby



# High Sheriff Fund

19

The High Sheriff's Fund has been administered by LCF since 2011, which provides grants of up to £5,000 to support community safety, crime prevention, and social cohesion projects across Lincolnshire.

## Tonic Health, Boston

Funding has supported the initial stages of a new youth hub at Prescod Hall in Boston. Tonic Health has used the grant for consultation, planning and staffing time to shape a youth-focused space based on what local young people want and need.

Through events and surveys, young people have been directly involved in shaping plans for the space, contributing ideas that are influencing everything from activities to how the space looks and feels. A new Youth Offer Panel has been formed to coordinate efforts from local organisations, and a comprehensive business plan is now in place to support future development.

The hub is set to officially launch just before the school Easter holidays, offering a safe, welcoming space designed by and for the young people of Boston.

*"I feel like Boston is missing a safe place for young people, and this hub would ultimately provide that!"*



### Case Study:



### Case Study:

## JB's Community Outreach, East Lindsey

JB's Community Outreach used **£4,995** of funding to deliver I Can Lead, foundation leadership courses in schools and community settings across East Lindsey for young people aged 13 to 16. These courses gave young people the confidence and knowledge to deliver basic sports sessions under supervision, skills that are transferable to other sectors.

The project supported the personal growth of participants, helping them gain independence, take on responsibilities, and think about their future careers. It also reduced financial barriers to participation, delivering over £1,300 in equivalent training value at no cost to learners.

Engagement on social media also showed wide community support for the programme, which has encouraged more schools and venues to express interest in future sessions.



*"This course helped me realise I can be a leader and gave me confidence to try something new."*





# Birchwood Big Local

Following recommendations by sector colleagues, the Foundation was approached by Local Trust and the Birchwood Big Local Partnership to provide grant management expertise to help them distribute grant funding worth over £400,000 within a very tight timeline.

The aims and objectives of Birchwood Big Local were to improve the wellbeing of residents, help strengthen the community, and address one of four priorities creating: a cleaner, brighter and safer community; opportunities for children and young people to thrive; 'a great community', where people look out for and support each other, provide more opportunities for interaction, raise the aspirations, and reduce child and family poverty.

Over the course of four weeks, the team visited Birchwood, Lincoln, speaking to representatives from organisations, as well as residents, to try to understand local needs and priorities. We launched the scheme and worked with the Partnership to reach

informed decisions about how the funds should be distributed for greatest local impact.

Successful projects included a new library for a pre-school, youth engagement activities, creation of an outdoor space, projects addressing food poverty, first responder training, refurbishment of local scout hut, activities for young people with learning disabilities, and local a woodland project.

We'd like to share examples of funded activities, and at the time of writing this review, many are ongoing.

20

21

## Citizens Advice Lincoln & Lindsey

A grant enabled Citizens Advice to set up a dedicated advice service at Birchwood Families Centre, giving local residents access to help with benefits, debt, housing, employment, legal issues, and everyday costs. The service fills a vital local gap, reaching those with limited access to advice. Strong links with the Family Hub, Early Help teams, schools, and community groups ensure swift, effective support. This project has strengthened the safety net in Birchwood, helping families tackle challenges and improve financial and emotional resilience.

"This has allowed us to make a real difference to families in Birchwood. It's not just about advice, it's about connection and trust."



## Case Study:

### Linkage Community Trust

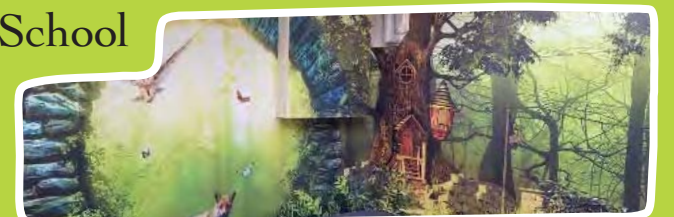
Funding supported access to a mobile sensory bus and therapy sessions for children with disabilities. To date, 49 sessions have taken place, 35 in schools and 14 in community venues, with more planned. Delivered in low-stimulation settings, including LEGO-based therapy, sessions support motor skills, communication, and confidence. A new sensory library also allows families to borrow resources for home use. 13 adults have been trained to deliver similar sessions, leaving a legacy and widening the programme's reach.

"The sensory sessions have helped our children open up and build their confidence in ways we didn't expect. It's been life-changing."

## Case Study:

### Woodlands Infant & Nursery School

Funding was used to wrap the library walls, creating a visually calming and engaging space to inspire reading and learning. Many children at the school arrive below national expectations, but the refreshed environment is already sparking greater interest in books. Teachers have noted that children are more excited about reading and better engaged in learning. This vibrant space supports literacy and creativity, skills that will benefit pupils long-term.



"We're so grateful – without this, we couldn't have created such a beautiful, calming space for our children."

## Case Study:

### Blessings Food Service CIC

Funding helped Blessings provide hot meals and activities for vulnerable families in a safe, welcoming space. Parents were supported to learn about budget cooking, nutrition, and easy meal prep. Around 120 people benefit weekly. The impact is immediate and lasting, families now eat together, learn to shop smart, and cook healthy meals. One family, once reliant on frozen food, now confidently prepares nutritious meals and manages their shopping more effectively thanks to this practical, supportive project.



"We've had a great experience with LCF, lots of support during the funding process."

## Case Study:

### Birchwood Scout Hut

Funding enabled major improvements to the Scout Hut, including a new boiler, flooring, tables, chairs, sound equipment and storage, transforming it into a safer, more efficient, and welcoming space for Scouts and the wider community.

Damaged flooring was replaced, improving accessibility and safety. With upgraded facilities and layout, the group can host more activities and rent the space to others, generating income for reinvestment.

The improved infrastructure allows the Scout Group to deliver richer experiences for local children and creates a valuable, multi-use venue.



**Awarded:**

Groups

**18**

Value

**£374,680**

Beneficiaries

**1,300**

"Birchwood Big Local Partnership is grateful to LCF for distributing significant funds within such a tight timeframe. Their approachable team worked closely with local organisations, ensuring a smooth, well-managed process delivering real benefits for Lincoln's Birchwood residents. On behalf of the Partnership Board, thank you for your professional and supportive service throughout."

Eddie Strengiel, Board Chairman



# MAST

## Making A Start

The MAST programme has been a cornerstone initiative of the Lincolnshire Community Foundation since its inception in 2011. The programme is set out to assist individuals aged sixteen and over who face significant financial barriers when getting into long-term employment and further education. By providing small grants for specialised training courses to essential equipment and clothing the programme empowers individuals to make meaningful steps towards securing long-term employment opportunities or venturing into further education.

In 2025 the Foundation intensified its efforts to address high levels of economic inactivity and unemployment by redefining the programme itself. Targeted support will now be prioritised within Skegness, Mablethorpe, and Lincoln, all of which are areas identified by the Foundation's Lincolnshire Visual Intelligence System (LVIS) as facing significant economic challenges. Whilst the programme is open to all eligible applicants across the Greater Lincolnshire area, this targeted approach aims to deliver support where it is needed the most. Within this redefining of the programme, particular emphasis has been put on supporting under-represented groups

such as: people leaving care, people recovering from mental health conditions, people returning to work after parental leave, and young people transitioning into further education.

Funding from MAST this year has helped provide DBS checks for individuals looking to start work immediately, purchased interview clothing for individuals applying for placements, and supplied railcards to enable six-form students to attend college courses starting in September. Unsuccessful applicants have been indirectly supported through knowledge-based signposting to more appropriate forms of support.

Applications Received

415

Applications Approved

155

Amount Awarded

£18.5k

Employment Access

115

Business Set up

71

Training & Education

25



### Case Study:

#### StrawbaleVegUK, Lincoln

For many years, Simon Gibbins of StrawbaleVegUK has long championed strawbale gardening, an innovative, soil-free method ideal for growing vegetables, herbs, and flowers. It's also weed-free and accessible for people with mobility issues, with bales at a height suited to wheelchair users.

Simon built his self-employment journey around this method, previously receiving support to create a DVD, e-book, and website. He now sells his own seed range from home in Lincoln. When his ageing printer broke just before Christmas 2024, he couldn't produce seed packet labels to fulfil seasonal orders.

Through the MAST programme, Simon received £150 to buy a new laser printer and ink. This small grant helped him complete orders, improve label quality, and speed up production—protecting his business at a critical time.



"Without this support I wouldn't have been able to fulfil my Christmas orders. The new printer hasn't just kept my business going, it's improved the quality of what I can offer my customers."

22

23

Recognising the barriers young people often face in accessing start-up funding, the Lincolnshire Community Foundation has proudly partnered with SWEF (formerly the South West Enterprise Fund) to deliver meaningful support to the next generation of business leaders.

Through this initiative, we offer grants of up to £2,000 to aspiring entrepreneurs aged 18–30 across Lincolnshire, enabling them to take their first steps towards building a successful enterprise. The fund is designed to foster innovation and self-employment, offering a vital springboard for those who may otherwise struggle to access finance.

Since launching in 2023, we have awarded almost £25,000 to 21 young entrepreneurs, supporting a diverse range of new

businesses, from health and beauty ventures to niche services such as casket weaving for end-of-life care. For many recipients, this grant has been the catalyst needed to turn an idea into a reality.

We are proud to play a part in their journey and will be watching with interest and a small amount of pride as these businesses grow, evolve, and contribute to Lincolnshire's economic and social fabric.

Applications

Approved

Amount Distributed

Since 2023

36

21

£17,120

2024-25

24

15

£24,999



### Case Study:

#### Angel Sweet, Old School Gym, Mablethorpe

Angel Sweet turned her fitness journey into a business after spotting a lack of accessible gyms in Mablethorpe. Passionate about weight-lifting and community health, she secured a loan, used her savings, and opened The Old School Gym, a 24-hour facility built around her vision.

A **£2,000** SWEF grant in May 2024 funded a commercial leg press machine, now one of the gym's most popular. It's boosted engagement and encouraged beginners to explore strength training, supporting Angel's goal of improving local wellbeing.

She plans to expand with a mezzanine, introduce personal training, and promote active lifestyles to reduce NHS referrals.



This small initial grant help us get open and get the ball rolling and we are incredibly grateful to the team at SWEF for believing in our vision and helping our idea take off!

Natasha – Unseen Arts





# Community Benefit Funds

LCF currently manages 6 Lincolnshire schemes benefitting communities from Laceby to Sutton Bridge, and from Anderby Creek across to Bicker. Developers recognise LCF's skill and expertise to identify and support community led projects.

These grant programmes are funded by the developers of renewable energy schemes (wind and solar) and once approved, LCF enters into a formal agreement to distribute grant funding lasting up to 40 years, ensuring it benefits communities impacted by the built infrastructure. To do this effectively, the Grants Team recruit, train and support a volunteer led panel

(residents/infrastructure representatives etc) who make recommendations about how the funding is allocated. They also help inform the priorities for the fund covering issues such as loneliness & isolation, youth engagement, environmental education and sustainability. We have developed transparent, robust processes that include roles and responsibilities, and conflicts of interest.

## Laceby Solar Farm Community Fund

*Offers grants of up to £5,000 to volunteer-led, not-for-profit projects in Laceby and nearby villages, supporting community cohesion, local facilities, and environmental or energy efficiency improvements.*



### Case Study:

## The Laceby Community Collective

LCF was approached by Laceby Parish Council in 2018 to oversee this scheme, as their governance structures prevented them from receiving this level of funding. We established a local panel to guide decision-making, still one of our most engaged groups, consistently attending twice-yearly meetings and offering valuable local insight. They actively promote the fund, support projects, and are committed to making a real local impact. To date, **£501,713** has been awarded to 83 projects. The developers, reassured by its success, have recently added more funding.

Since November 2021, we've supported the refurbishment of Butt Lane Pavilion, a large, nearly derelict community building. Initially, our CEO (then acting as Grants Manager) received a small request from the Men's Sunday League Football team to replace guttering. As they didn't own the building, funding couldn't be awarded. LCF brought together the Parish Council, North East Lincolnshire Council (the owner), and the local panel to discuss a solution.

With our guidance, a community consultation was commissioned to explore interest in developing a facility that wouldn't duplicate existing provision. The response was overwhelmingly positive, leading to the creation of a new organisation: The Laceby Community Collective. So far, the project has received £88,500 for consultation, business planning, and a wide range of refurbishment works, from roofing and plumbing to kitchen installation and summer events. We've also signposted them to additional funding, which they've successfully secured.

The facility is on track for completion by summer 2025, with plans to refurbish the surrounding play area. It's a strong example of LCF's convening power and long-term impact.

24

25

## Humber Gateway Community Fund

*Is open to grassroots, volunteer-led organisations in North East Lincolnshire, supporting projects that promote community cohesion, youth engagement, older people's wellbeing and improved local facilities.*



### Case Study:

## Christian Action & Resource Enterprise Ltd (CARE)

CARE received **£2,500** from the Humber Gateway Fund, bringing Christmas gifts and treats to 1,030 children in families facing severe hardship across Grimsby, Cleethorpes, and Immingham. Many of these children would have otherwise gone without during the festive season. The funding provided not only practical support but also inspired a wave of kindness, with community members donating gifts, volunteering time, and local shops offering help. With families struggling to afford food and heating, this initiative brought relief, joy, and dignity at a particularly difficult time, ensuring children woke to something special and families felt supported by their community.

## Sutton Bridge Solar Farm Community Fund

*Supports residents in and around Sutton Bridge with grants for projects that improve education, heritage, biodiversity, green spaces and local wellbeing.*



### Case Study:

## Sutton Bridge Community Larder

Sutton Bridge Community Larder received **£4,000** to help meet a 40–50% rise in demand during 2023, enabling the purchase of essential food, toiletries, and cleaning supplies. The funding directly supported 320 individuals and helped sustain vital services for vulnerable families and individuals in the area. Volunteers maximised the impact of the grant by sourcing items carefully, shopping around, and negotiating discounts to stretch resources further. This community-led effort has ensured continued support during a time of increased need, offering practical help and stability to those most affected.

## Triton Knoll Offshore Wind Farm Community Fund

*Offers grants to communities within 3km of Anderby Creek and 5km of Bicker Fen for initiatives that strengthen local life, community spirit & sustainability.*



### Case Study:

## Anderby Rocks, Anderby

Anderby Rocks received **£2,000** from the Triton Knoll Offshore Wind Farm Fund to improve event infrastructure. Despite rain throughout the day, the four gazebos purchased proved essential, offering shelter and enhancing the experience for around 1,700 attendees of all ages from both the local area and wider community. Although only four units were affordable due to rising costs, they made a visible difference and will benefit future events. The grant also covered reliable generators, which kept music playing and fridges and freezers running, ensuring food and drink remained chilled and readily available, contributing to the day's lively atmosphere and overall success.



# Community Benefit Funds



## Case Study:

### Bicker Trust Fund

Supports projects within a 10 mile radius of the Bicker Fen substation, offering grants to community groups for conservation, environmental improvements, energy efficiency and education.



### Gosberton Youth Club

Gosberton Youth Club received **£1,734** from the Bicker Trust to lag the loft space in the roof of the main hall.

The project was completed quickly and efficiently, delivering an immediate benefit to the centre and setting the foundation for long term impact. Thanks to the improvements funded by the grant, the centre is now able to significantly reduce its energy costs savings which would otherwise have been passed on to the individuals and groups who use the space.

This has helped to make the centre more sustainable and accessible for the whole community. Since receiving the grant, the centre has gone from strength to strength, expanding its offer and becoming an even more valued hub for local people. With lower overheads, the team has been able to focus more on delivering a wide range of activities, services and events that meet the needs of local residents and bring the community together.

26

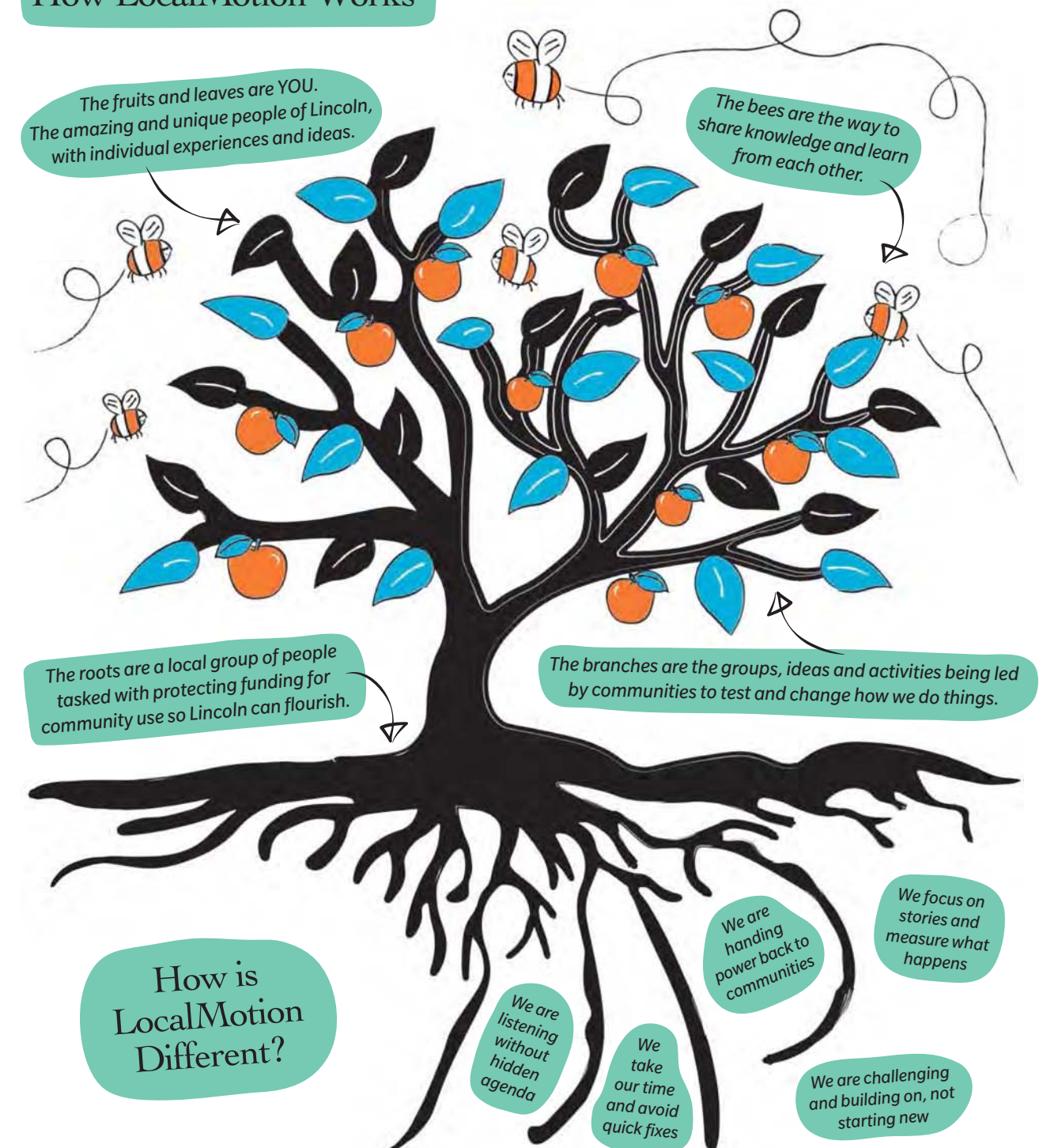
# Programmes

LocalMotion

27

The purpose of LocalMotion is to reimagine how communities, systems and funders can work together equitably, effectively and inclusively for all and for the collective learning to influence change at a local and national level.

## How LocalMotion Works





# Programmes

## Enterprise Development Support

A proportion of community groups and voluntary organisations have the opportunity to earn part, or in some cases, all of their income. The umbrella term ‘social enterprise’ is used to describe these opportunities and is also used to describe enterprises and businesses that are democratically owned e.g. community interest companies, charitable incorporated organisations, and co-operatives/mutuals.

Enterprise development is the activity that starts up or scales up income generation and enterprise development support is the interventions and funds that enable organisations to operate at a commercial level and earn income. Why is enterprise development support important? Generating income or diversifying income is one strand towards financial sustainability and sustained impact. Examples of support include: setting up governance to enable trading; setting strategy and plans for

trading; funds for market testing and marketing; funds to launch new products or services; evidencing impact; funds/advice to adopt new technology or practices. National interest in this agenda coalesces around the Community Enterprise Growth Plan. Locally, Lincolnshire Community Foundation has been leading on this form of support, combining economic development and social impact through the **Gainsborough Local Access Programme (GLAP)** and **Supporting Social Enterprise (SSE)**.

### Gainsborough Local Access Programme (GLAP)

Funded through Access (The Foundation for Social Investment) this programme is in its fourth year in Gainsborough. GLAP is part of a wider national pilot to deliver interventions and provide learning for the question ‘Will support and investment delivered in a place-based context via a partnership, or organisations enable greater shifts locally than would happen if individual strands of work were delivered separately and externally?’

In Gainsborough, the programme offers free access to specialist and technical advice, bursaries to ‘kickstart enterprising thinking’, Enterprise Development Awards and market development activity. This year has focused on light touch interventions, development work on food insecurity, the free specialist advice and work on social investment.

### Supporting Social Enterprise (SSE)

Taking the learning from GLAP, Lincolnshire Community Foundation designed a pilot piece of enterprise development support across Boston, East Lindsey and South Holland. Co-funded through the UK Shared Prosperity Fund and the Lincolnshire Community Foundation, the pilot work took place over 12 months and combined Ideas and Innovation bursaries with free specialist advice.

The pilot’s target was to support 15 social enterprises and trading charities and within the 12 months a total of 44 organisations received support. Of these 44 beneficiary organisations, 18 were awarded an Ideas and Innovation bursary (on average £1,000) to meet their bespoke enterprise development need. 17 organisations reported that they had reduced the environmental impact of delivering their services/products and 7 reported that they created new income generating products.

28

29

### Case Study:



## Thistles Market Garden, Sutterton

A **£1,000** Ideas and Innovation Bursary is helping Thistles Market Street Garden Ltd improve safety, access, and participation for adults with learning difficulties. The funding supports four key improvements to enhance daily experiences for service users.

Part of the grant is going towards a larger polycarbonate greenhouse, which is safer than glass and allows more individuals to participate in activities at once, while also increasing capacity to grow and sell produce. It’s also funding a new shed to replace a rotten, inaccessible structure, offering safer access to tools.

Additional funding supports fundraising for a larger minibus, helping more users travel to and from the site and join community projects. Finally, it’s helping cover solicitor fees as the group works to extend the garden lease and secure its long-term future. These improvements will enable more people to benefit from a safe, supportive space with greater opportunities to learn, grow, and connect with their community.



### Case Study:

## Cat Hall

A **£1,000** Ideas and Innovation Bursary enabled Cat Hall, Mental Health Nurse and Community Projects & Wellbeing Lead at St Michael’s Church in Waddington, to explore new models of Intergenerational Living, with a view to developing a scheme for the Lincoln area.

The funding allowed Cat to attend two national visioning events. The first, at Belong in Chester, brought together pioneers from across sectors to share research and best practice in intergenerational care, offering insight, inspiration, and valuable new connections. The second, hosted by the Housing Learning and Improvement Network in Luton, offered leadership perspectives and lived experience from national experts.

These experiences have helped refine Cat’s vision for a locally rooted, community-connected model of intergenerational living that avoids the isolation often seen in larger schemes. The bursary has played a key role in shaping bold new thinking and leadership in Lincolnshire.



*The GLAP funding is more than just financial support; it’s a catalyst for transformation. It’s enabling WOW Worthy Women CIC to transition from a small, grant-reliant organisation into a thriving, self-sufficient social enterprise.*

WOW Worthy Women CIC





# Spital

With support from LCF, the Spital Charity helps students from De Aston School Market Rasen access enriching opportunities that spark confidence, creativity, and ambition. From creative writing to sport and theatre, this funding helps inspire learning, broaden horizons, and provide meaningful experiences that positively shape the futures of young people in the school.

30

## Case Study:

### Sixth Form Enrichment

Thanks to a **£250** grant from the Spital Charity, De Aston's Sixth Form students embraced a varied programme of enrichment activities designed to build life skills, confidence, and creativity beyond the classroom. From the adrenaline of rock climbing and the calm of stand-up paddleboarding to the focus of pottery and jewellery making, students were encouraged to try new things, step out of their comfort zones, and uncover hidden talents along the way.

A standout addition was a jewellery-making kit, now a lasting resource for future cohorts. The kit provides a calming, hands-on outlet for creative expression, allowing students to design and craft pieces like pendants and bracelets while learning practical skills in a relaxed, supportive environment. It's a simple but powerful way to boost wellbeing, confidence, and connection, showing how even a small grant can make a meaningful, lasting difference.



"We're incredibly grateful to the Spital Charity for making these experiences possible. Having the opportunity to do something different was fun, especially to do it with friends."



### Classics Enrichment, Olympus Challenge

A Spital Charity grant supported nine De Aston students to take part in the Olympus Challenge, an enrichment project introducing Classics and Latin through hands-on learning. The programme blended academic exploration with cultural experiences.

To complete the challenge, students visited the British Museum to explore Greek exhibits and produce written and photographic reports. They also attended a West End performance of *Much Ado About Nothing*, broadening their cultural awareness and enthusiasm for the subject.

The project boosted confidence, deepened knowledge, and sparked wider interest. A formal Key Stage 4 Classics course and entry-level Latin for younger students are now in development, ensuring more pupils can access classical studies.



## Case Study:



# Lincolnshire Agricultural Society

31

LCF contributes towards the cost of employing an Education Officer at Lincolnshire Agricultural Society (LAS), who's role is to connect schools with food, farming and the environment, bringing learning to life through hands-on experiences. This includes supporting the LAS Schools' Challenge, a fun, curriculum-linked competition where young people explore one of the ten challenges and showcase their finished projects at the Lincolnshire Show.

**16,000**

"Over the past year, 16,000 young people have engaged in the LAS Education programmes gaining valuable insights into food, farming and rural life."



**145+**

"LAS proudly partnered with 145+ schools across Greater Lincolnshire delivering 15 high-impact educational events that have both inspired students and empowered teachers through targeted CPD."



"Everything LAS do is driven by their mission to champion, support and educate around food, farming and rural life helping to shape the next generation of informed, engaged citizens and helping to build a skilled, sustainable agricultural workforce."





# Ways to Give

We constantly strive to facilitate and deliver outcomes for people across Greater Lincolnshire. Since our inception, we have distributed over £24M and the positive impact would not be possible without the support of existing and future donors. We want to highlight the possible ways to give to the Foundation, that will ultimately be for the benefit of others.

## Corporate Giving

Every company we work with has access to our extensive local knowledge, advice on how to structure their CSR programmes and which initiatives will work for them – and which won't.

Many of our corporate donors have helped us by providing interesting venues for meetings or events, recommending us to their peers and sponsoring our events and activities.

We offer a bespoke service to our corporate clients, tailoring CSR programmes to meet their needs, and they can be as involved in their giving – or as hands-off – as they like.

### How Can We Help...

- a personalised, professional service that meets your clients' wishes and means, while maximising benefit to the community;
- a range of philanthropy and giving options and opportunities to ensure your clients' gifts are tax efficient;
- knowledge of community needs and organisations across Lincolnshire that make a difference;
- expertise in providing funding and other charitable support.

## Personal Giving

### Creating A Named Fund

Lincolnshire Community Foundation are specialists in creating and managing named funds for individuals. A named fund is simply a cost-effective alternative to a charitable trust. As we work closely with you in creating meaningful change in local lives and communities, your unique fund can focus on any cause or interests you may have. This entire process is personalised, safe and customised so your expectations are met whilst improving the lives of people within Greater Lincolnshire.

### Types Of Named Funds

- The name of the fund or whether to remain anonymous
- The geographical area of benefit in Lincolnshire
- The causes that you wish to support in your grant making
- The level of involvement in terms of giving and selecting projects to fund

### Professional Advisors

Professional Advisors partner to help their clients make their charitable giving easy, and rewarding, while supporting their financial planning goals. We work with solicitors, accountants, financial advisors, and wealth managers to provide flexible options to suit your clients' wishes.

Whether it is related to the sale of a business, for tax purposes or estate planning, we are here to help and always welcome a conversation to talk through ideas or scenarios.

### Leaving A Lasting Legacy

At Lincolnshire Community Foundation, we are always humbled when people want to ensure that their charitable giving paves the way for generations to come. Your Legacy will make a difference, no matter the size. We work with you and your Professional Advisers to ensure that the fund is set up to meet your wishes as part of your Will.

For more information, and to discuss some of the benefits of leaving a legacy, our team of experts would love to talk to you, and guide you through the process.

### Ways To Leave A Legacy

- **Pecuniary** – a specified sum of money
- **Specific** – a specified item, such as shares or property
- **Residuary** – all or part of the Estate after any pecuniary legacies have been paid
- **Reversionary** – the residue of the Estate after the death of a surviving spouse

32

33

## Tax-Efficient Giving Tips:

### Gift Aid

- By making a Gift Aid donation, charities can receive extra funds without any additional cost to you, as a UK taxpayer.
- The donation is treated as if basic rate income tax had been deducted, allowing charities to reclaim that tax from HM Revenue & Customs (HMRC).
- For instance, a donation of £10k with Gift Aid would mean the charity can claim £2.5k, making your total gift amount £12.5k.

### Tax Relief for Higher Rate Taxpayers

- Higher rate taxpayers can claim back the difference between the higher rates of tax (40% or 45%) and the basic rate (20%) on the total donation value.
- For example, a 40% taxpayer donating £10k can reclaim £2.5k, resulting in a net cost of £7.5k to the donor, but the charity receives £12.5k.

### Self-Assessment Giving

- If you complete a Self-Assessment tax return and are due a tax refund, you can opt to donate all or part of the repayment directly to a charity through 'Self Assessment Giving' or 'SA Donate'.

### Payroll Giving

- Contributions to charity via payroll giving can be made in any amount. Donations are given from your gross salary before tax, reducing the tax paid on the donation.

### Giving in Your Will

- Leaving money to charity in your Will can lower Inheritance Tax due from your estate. Options include a fixed sum or a portion of your estate designated to a charity.

### Gifts of Assets

- Tax relief is available for gifts of certain shares, securities, and investments to charity. Income tax relief and capital gains tax relief may apply on qualifying investments given to a UK charity.

### Donations by Limited Companies

- Your company's donation to charity is deductible from its total profits when calculating Corporation Tax. Corporate donations are not eligible for Gift Aid.

### Gifts of Land, Buildings or Shares

- Your company may be eligible for Corporation Tax relief by donating land, property, or qualifying shares to a charity, or by selling them to a charity below their market value.

## Transfer of Family Trusts

At a certain point, individuals or families may need to think about succession planning for their charitable trust. This period can be uncertain, but we are here to help.

By transitioning a charitable trust to LCF, you can rest assured that the trust's initial charitable objectives will be upheld and adjusted to meet evolving needs. We will handle the administrative responsibilities, enabling the remaining family members and trustees to stay engaged in decision making in any capacity they prefer.

### How Can We Help...

- We will assist you in transferring your funds in a tax efficient manner, providing the flexibility to utilise various assets such as cash, shares and property.
- Collaborating with you, we will tailor the fund to adapt to evolving interests, allowing the focus of donations to shift as needed. This empowers family members to oversee, update and steer the fund over time while preserving your initial goals.
- This approach eliminates the necessity for trustee succession.
- Our services include handling all administrative tasks, Charity Commission reporting, fund management and facilitating grant distributions.



# Funds we've Managed this Year

34

We want to express our gratitude to all those individual, corporate, public and private donors who generously contributed funds to us this year, enabling us to make a difference.

Name of Fund	Name of Funder	Location	Type/No. Supported	Distributed
Bicker Wind Farm Trust	EDF Renewables	10 mile radius of Bicker Fen	Group / 14	£35,197
Big Lincolnshire Welcome Fund	Lincolnshire County Council	Lincolnshire	Individual / 106	£22,158
Birchwood Big Local	Local Trust, National Lottery	Birchwood, Lincoln	Group / 18	£374,680
Bishop of Lincoln's Social Justice Fund	Diocese of Lincoln	Greater Lincolnshire	Group / 29	£48,524
Evan Cornish Grassroots Fund	Evan Cornish Foundation	Greater Lincolnshire	Group / 27	£97,000
Grange Wind Farm Community Fund	RES	10 mile radius of Tydd St Mary	Group / 17	£36,498
High Sheriff Fund	High Sheriff of Lincolnshire	Greater Lincolnshire	Group / 5	£8,962
Household Support Fund (Boston)	Boston Borough Council	Boston Borough	Individual / 834	£150,400
Household Support Fund (E-Lindsey)	East Lindsey District Council	East Lindsey	Individual / 1379	£218,100
Household Support Fund (S-Holland)	South Holland District Council	South Holland	Individual / 1244	£242,250
Household Support Fund (S-Kesteven)	South Kesteven District Council	South Kesteven	Individual / 555	£126,800
Household Support Fund (W-Lindsey)	West Lindsey District Council	West Lindsey	Individual / 1295	£225,280
Humber Gateway Community Fund	RWE	North East Lincolnshire	Group / 29	£44,330
Laceyby Solar Farm Community Fund	Sirius Renewable Energy	Laceyby and surrounding areas	Group / 13	£72,895
Make A Start (MAST)	Lincolnshire Community Foundation	Greater Lincolnshire	Individual / 8	£1,155
North Kesteven Lottery Fund	North Kesteven District Council	North Kesteven	Group / 13	£6,290
North Kesteven Rural England Prosperity Fund	North Kesteven District Council	North Kesteven	Group / 27	£271,731
Sutton Bridge Solar Farm Community Fund	EDF Renewables	Sutton Bridge & surrounding areas	Group / 6	£19,720
SWEF Enterprise Grants	SWEF	Greater Lincolnshire	Individual / 15	£17,119
Triton Knoll Offshore Community Wind Farm Fund	RWE	3km Anderby Creek or 5Km of Bicker Fen	Group / 12	£45,770
Ukraine Refugee Integration Fund	Lincolnshire County Council	Lincolnshire	Group / 11	£97,489
UK Shared Prosperity GRASSroots Fund (Boston)	South and East Lincolnshire Councils Partnership - Boston Borough Council	Boston	Group / 19	£241,440
UK Shared Prosperity GRASSroots Fund (E-Lindsey)	South and East Lincolnshire Councils Partnership - East Lindsey District Council	East Lindsey	Group / 44	£688,100
UK Shared Prosperity GRASSroots Fund (S-Holland)	South and East Lincolnshire Councils Partnership - South Holland District Council	South Holland	Group / 34	£513,214
Other (Discretionary Funding)	Lincolnshire Community Foundation	Greater Lincolnshire	Individual / 20	£4,289
Other Anonymous Funding	AN Fund	Greater Lincolnshire	Group / 7	£18,000

35

Statement of Financial Activities for the Year Ended 31 March 2025.

	Unrestricted funds £	Restricted funds £	Endowment funds £	Total 2025 £	Total 2024 £
Income and Endowments from:					
Donations and legacies	699	4,854,402	-	4,855,101	2,932,791
Charitable activities	442,545	87,501	-	530,046	383,765
Investment income	207,240	-	-	207,240	171,020
Total income	650,484	4,941,903	-	5,592,387	3,487,576
Expenditure on:					
Raising funds	(1,123)	-	-	(1,123)	(972)
Charitable activities	(479,960)	(4,272,557)	(113,440)	(4,865,957)	(2,489,994)
Total expenditure	(481,083)	(4,272,557)	(113,440)	(4,867,080)	(2,490,966)
Gains/losses on investment assets	(4,121)	-	(193,419)	(197,540)	376,713
Net income	165,280	669,346	(306,859)	527,767	1,373,323
Gross transfers between funds	63,593	19,844	(83,437)	-	-
Net movement in funds	228,873	689,190	(390,296)	527,767	1,373,323
Reconciliation of funds					
Total funds brought forward	2,200,917	1,296,964	3,525,315	7,023,196	5,649,873
Total funds carried forward	2,429,790	1,986,154	3,135,019	7,550,963	7,023,196



# Our People

None of this could be possible without a committed Board of Trustees, and an effective team who have bags of empathy.

36

## Lincolnshire Community Foundation Team



**Sue Fortune**  
CEO



**Cara Elliott**  
Finance & Grantmaker



**Aaron Bailey**  
Data researcher & Grantmaker



**Helen Cater**  
Grantmaker



**Hayley Crawford**  
Grantmaker



**Helen Kearsley-Cree**  
Head of Strategy  
& Development



**Charlotte Brooks**  
Lincoln LocalMotion  
Co-ordinator



**Claire Edwards**  
Communications,  
Marketing & Grantmaker



**Cavan Collins**  
Grantmaker



**Katie Littlewood**  
Grantmaker

## Trustees



**Paul Scott**  
Chair



**Lizzie Milligan-Manby**  
Vice Chair



**Stephen Ryder**  
Trustee



**Paula Baumber**  
Trustee



**John Maitland**  
Trustee



**Danielle Lowther**  
Trustee



**Andrew Deeley**  
Trustee



**Craig Cooksley**  
Trustee

**Auditors:**  
Forrester Boyd,  
26 South Saint Mary's  
Gate, Grimsby,  
North East Lincolnshire  
DN31 1LW

**Accountants:**  
Simon Moss & Co,  
34A South Gate,  
Sleaford, Lincolnshire  
NG34 7RY

**Investment  
Managers:**  
CCLA, One Angel Lane,  
London EC4R 3A

**Financial Advisor:**  
Money Minder,  
The Old Ale House,  
41 Boston Road,  
Sleaford NG34 7ER

## Acknowledgement to Panel members:

Staff and Trustees would like to thank volunteer panellists across the County who ensure our grant processes are fair, transparent, and equitable. Their input ensures we deliver greater positive impact where it's needed most.

# Our Trusted Connections

37



CITY OF  
**Lincoln**  
COUNCIL



SOUTH  
KESTEVEN  
DISTRICT  
COUNCIL



**North Kesteven**  
DISTRICT COUNCIL



**active  
lincolnshire**



**East Lindsey**  
DISTRICT COUNCIL



Department  
for Work &  
Pensions

**Lincolnshire**  
COUNTY COUNCIL  
*Working for a better future*



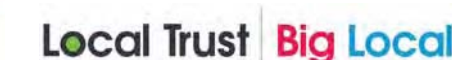
UNIVERSITY OF  
LINCOLN



**RWE**



**SWEF**  
BACKING BUSINESS INITIATIVE







# Lincolnshire

COMMUNITY FOUNDATION



**Charity Number:** 1196448

**Telephone:** 01529 305825

**Email:** [info@lincolnshirecf.co.uk](mailto:info@lincolnshirecf.co.uk)

**Address:** Mill House, Carre Street, Sleaford, Lincolnshire NG34 7TW